

## Anti-Phospho-PRKN-Ser131 antibody (70-150) (STJ91122)

STJ91122

### GENERAL INFORMATION

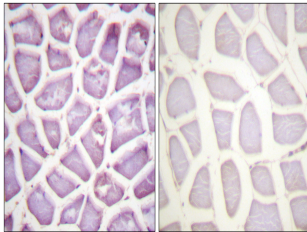
<b>Product Type</b>	Primary antibodies
<b>Short Description</b>	Rabbit polyclonal antibody anti-Phospho-E3 Ubiquitin-Protein Ligase Parkin-Ser131 (70-150) is suitable for use in Western Blot, Immunohistochemistry, Immunofluorescence and ELISA research applications.
<b>Applications</b>	WB, IHC-P, IF-P, ELISA
<b>Host/Source</b>	Rabbit
<b>Reactivity</b>	Human, Rat, Mouse

### PRODUCT PROPERTIES

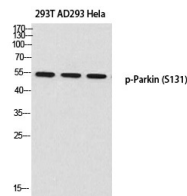
<b>Clonality</b>	Polyclonal
<b>Clone ID</b>	
<b>Concentration</b>	1 mg/mL
<b>Conjugation</b>	Unconjugated
<b>Purification</b>	The antibody was affinity-purified from rabbit anti-serum by affinity-chromatography.
<b>Dilution</b>	IHC 1:100-1:300
<b>Range</b>	ELISA 1:20000
<b>Formulation</b>	PBS, 50% Glycerol, 0.5% BSA and 0.02% Sodium Azide.
<b>Isotype</b>	IgG
<b>Storage</b>	Store at -20°C for up to 1 year from the date of receipt, and avoid repeat freeze-thaw cycles.
<b>Instruction</b>	

### TARGET INFORMATION

<b>Gene ID</b>	5071
<b>Gene Symbol</b>	PRKN
<b>Uniprot ID</b>	PRKN_HUMAN
<b>Immunogen</b>	The antiserum was produced against synthesized peptide derived from human Parkin around the phosphorylation site of Ser131 at amino acid range 101-150
<b>Immunogen Region</b>	70-150
<b>Specificity</b>	Phospho-PRKN-Ser131 polyclonal antibody (E3 Ubiquitin-Protein Ligase Parkin) binds to endogenous E3 Ubiquitin-Protein Ligase Parkin at the amino acid region 70-150 only when phosphorylated at Ser131.
<b>Immunogen Sequence</b>	



Immunohistochemistry analysis of paraffin-embedded human skeletal muscle, using Parkin (Phospho-Ser131) Antibody. The picture on the right is blocked with the phospho peptide.



Western blot analysis of 293T AD293 HeLa using p-Parkin (S131) antibody. Antibody was diluted at 1:500