

Anti-Phospho-EP300-Ser89 antibody (30-110) (STJ91120)

STJ91120

GENERAL INFORMATION

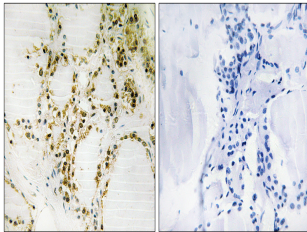
Product Type	Primary antibodies
Short Description	Rabbit polyclonal antibody anti-Phospho-Histone Acetyltransferase P300-Ser89 (30-110) is suitable for use in Immunohistochemistry, Immunofluorescence and ELISA research applications.
Applications	IHC-P, IF-P, ELISA
Host/Source	Rabbit
Reactivity	Human, Mouse, Rat

PRODUCT PROPERTIES

Clonality	Polyclonal
Clone ID	
Concentration	1 mg/mL
Conjugation	Unconjugated
Purification	The antibody was affinity-purified from rabbit anti-serum by affinity-chromatography.
Dilution	IHC 1:100-1:300
Range	ELISA 1:5000
Formulation	PBS, 50% Glycerol, 0.5% BSA and 0.02% Sodium Azide.
Isotype	IgG
Storage	Store at -20°C for up to 1 year from the date of receipt, and avoid repeat freeze-thaw cycles.
Instruction	

TARGET INFORMATION

Gene ID	2033
Gene Symbol	EP300
Uniprot ID	EP300_HUMAN
Immunogen	The antiserum was produced against synthesized peptide derived from human p300 around the phosphorylation site of Ser89 at amino acid range 55-104
Immunogen Region	30-110
Specificity	Phospho-EP300-Ser89 polyclonal antibody (Histone Acetyltransferase P300) binds to endogenous Histone Acetyltransferase P300 at the amino acid region 30-110 only when phosphorylated at Ser89.
Immunogen Sequence	



Immunohistochemistry analysis of paraffin-embedded human thyroid gland, using p300 (Phospho-Ser89) Antibody. The picture on the right is blocked with the phospho peptide.