

Anti-Phospho-MEF2C-Ser387 antibody (330-410) (STJ91116)

STJ91116

GENERAL INFORMATION

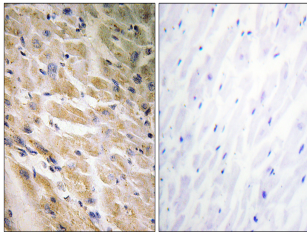
Product Type	Primary antibodies
Short Description	Rabbit polyclonal antibody anti-Phospho-Myocyte-Specific Enhancer Factor 2c-Ser387 (330-410) is suitable for use in Immunohistochemistry, Immunofluorescence and ELISA research applications.
Applications	IHC-P, IF-P, ELISA
Host/Source	Rabbit
Reactivity	Human, Mouse

PRODUCT PROPERTIES

Clonality	Polyclonal
Clone ID	
Concentration	1 mg/mL
Conjugation	Unconjugated
Purification	The antibody was affinity-purified from rabbit anti-serum by affinity-chromatography.
Dilution	IHC 1:100-1:300
Range	ELISA 1:10000
Formulation	PBS, 50% Glycerol, 0.5% BSA and 0.02% Sodium Azide.
Isotype	IgG
Storage	Store at -20°C for up to 1 year from the date of receipt, and avoid repeat freeze-thaw cycles.
Instruction	

TARGET INFORMATION

Gene ID	4208
Gene Symbol	MEF2C
Uniprot ID	MEF2C_HUMAN
Immunogen	The antiserum was produced against synthesized peptide derived from human MEF2C around the phosphorylation site of Ser387 at amino acid range 353-402
Immunogen Region	330-410
Specificity	Phospho-MEF2C-Ser387 polyclonal antibody (Myocyte-Specific Enhancer Factor 2c) binds to endogenous Myocyte-Specific Enhancer Factor 2c at the amino acid region 330-410 only when phosphorylated at Ser387.
Immunogen Sequence	



Immunohistochemistry analysis of paraffin-embedded human heart, using MEF2C (Phospho-Ser387) Antibody. The picture on the right is blocked with the phospho-peptide.