

Anti-Phospho-ADD1-Thr445 antibody (380-460) (STJ91115)

STJ91115

GENERAL INFORMATION

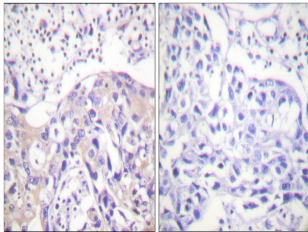
Product Type	Primary antibodies
Short Description	Rabbit polyclonal antibody anti-Phospho-Alpha-Adducin-Thr445 (380-460) is suitable for use in Immunohistochemistry, Immunofluorescence and ELISA research applications.
Applications	IHC-P, IF-P, ELISA
Host/Source	Rabbit
Reactivity	Human, Mouse, Rat

PRODUCT PROPERTIES

Clonality	Polyclonal
Clone ID	
Concentration	1 mg/mL
Conjugation	Unconjugated
Purification	The antibody was affinity-purified from rabbit anti-serum by affinity-chromatography.
Dilution Range	IHC 1:100-1:300 ELISA 1:5000
Formulation	PBS, 50% Glycerol, 0.5% BSA and 0.02% Sodium Azide.
Isotype	IgG
Storage	Store at -20°C for up to 1 year from the date of receipt, and avoid repeat freeze-thaw cycles.
Instruction	

TARGET INFORMATION

Gene ID	118
Gene Symbol	ADD1
Uniprot ID	ADDA_HUMAN
Immunogen	The antiserum was produced against synthesized peptide derived from human ADD1 around the phosphorylation site of Thr445 at amino acid range 411-460
Immunogen Region	380-460
Specificity	Phospho-ADD1-Thr445 polyclonal antibody (Alpha-Adducin) binds to endogenous Alpha-Adducin at the amino acid region 380-460 only when phosphorylated at Thr445.
Immunogen Sequence	



Immunohistochemistry analysis of paraffin-embedded human breast carcinoma, using ADD1 (Phospho-Thr445) Antibody. The picture on the right is blocked with the phospho peptide.