

## Anti-Phospho-GATA1-Ser142 antibody (80-160) (STJ91112)

STJ91112

### GENERAL INFORMATION

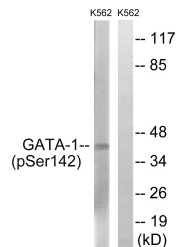
<b>Product Type</b>	Primary antibodies
<b>Short Description</b>	Rabbit polyclonal antibody anti-Phospho-Erythroid Transcription Factor-Ser142 (80-160) is suitable for use in Western Blot, Immunohistochemistry, Immunofluorescence, Immunoprecipitation and ELISA research applications.
<b>Applications</b>	WB, IHC-P, IF-P, IP, ELISA
<b>Host/Source</b>	Rabbit
<b>Reactivity</b>	Human, Mouse, Rat

### PRODUCT PROPERTIES

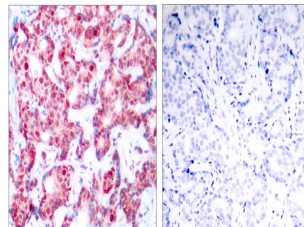
<b>Clonality</b>	Polyclonal
<b>Clone ID</b>	
<b>Concentration</b>	1 mg/mL
<b>Conjugation</b>	Unconjugated
<b>Purification</b>	The antibody was affinity-purified from rabbit anti-serum by affinity-chromatography.
<b>Dilution Range</b>	WB 1:500-1:2000 IHC 1:100-1:300 IP 2-5 ug/mg ELISA 1:5000
<b>Formulation</b>	PBS, 50% Glycerol, 0.5% BSA and 0.02% Sodium Azide.
<b>Isotype</b>	IgG
<b>Storage Instruction</b>	Store at 20°C for up to 1 year from the date of receipt, and avoid repeat freeze-thaw cycles.

### TARGET INFORMATION

<b>Gene ID</b>	2623
<b>Gene Symbol</b>	GATA1
<b>Uniprot ID</b>	GATA1_HUMAN
<b>Immunogen</b>	The antiserum was produced against synthesized peptide derived from human GATA1 around the phosphorylation site of Ser142 at amino acid range 109-158
<b>Immunogen Region</b>	80-160
<b>Specificity</b>	Phospho-GATA1-Ser142 polyclonal antibody (Erythroid Transcription Factor) binds to endogenous Erythroid Transcription Factor at the amino acid region 80-160 only when phosphorylated at Ser142.
<b>Immunogen Sequence</b>	



Western blot analysis of lysates from K562 cells, using GATA1 (Phospho-Ser142) Antibody. The lane on the right is blocked with the phospho peptide.



Immunohistochemistry analysis of paraffin-embedded human breast carcinoma, using GATA1 (Phospho-Ser142) Antibody. The picture on the right is blocked with the phospho peptide.

This product is suitable for in-vitro studies under the RESEARCH USE ONLY [RUO] licence. This product must not be used as for diagnostic or other medical purposes.  
St John's Laboratory Ltd, Knowledge Dock Business Centre, University Way, London, E16 2RD | Tel: 0208 223 3081