

## Anti-Phospho-VAV2-Tyr142 antibody (80-160) (STJ91109)

STJ91109

### GENERAL INFORMATION

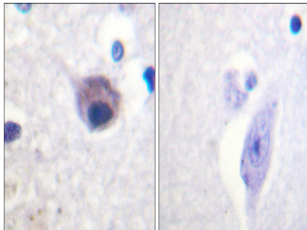
<b>Product Type</b>	Primary antibodies
<b>Short Description</b>	Rabbit polyclonal antibody anti-Phospho-Guanine Nucleotide Exchange Factor Vav2-Tyr142 (80-160) is suitable for use in Western Blot, Immunohistochemistry, Immunofluorescence, Immunocytochemistry and ELISA research applications.
<b>Applications</b>	WB, IHC-P, IF, ICC, ELISA
<b>Host/Source</b>	Rabbit
<b>Reactivity</b>	Human, Mouse

### PRODUCT PROPERTIES

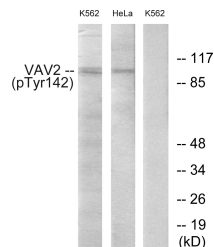
<b>Clonality</b>	Polyclonal
<b>Clone ID</b>	
<b>Concentration</b>	1 mg/mL
<b>Conjugation</b>	Unconjugated
<b>Purification</b>	The antibody was affinity-purified from rabbit anti-serum by affinity-chromatography.
<b>Dilution Range</b>	WB 1:500-1:2000 IHC 1:100-1:300 IF 1:200-1:1000 ELISA 1:10000
<b>Formulation</b>	PBS, 50% Glycerol, 0.5% BSA and 0.02% Sodium Azide.
<b>Isotype</b>	IgG
<b>Storage Instruction</b>	Store at -20°C for up to 1 year from the date of receipt, and avoid repeat freeze-thaw cycles.

### TARGET INFORMATION

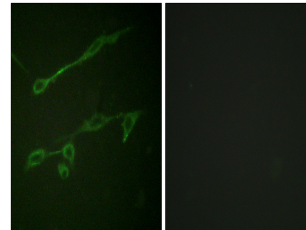
<b>Gene ID</b>	7410
<b>Gene Symbol</b>	VAV2
<b>Uniprot ID</b>	VAV2_HUMAN
<b>Immunogen</b>	The antiserum was produced against synthesized peptide derived from human VAV2 around the phosphorylation site of Tyr142 at amino acid range 108-157
<b>Immunogen Region</b>	80-160
<b>Specificity</b>	Phospho-VAV2-Tyr142 polyclonal antibody (Guanine Nucleotide Exchange Factor Vav2) binds to endogenous Guanine Nucleotide Exchange Factor Vav2 at the amino acid region 80-160 only when phosphorylated at Tyr142.
<b>Immunogen Sequence</b>	



Immunohistochemistry analysis of paraffin-embedded human brain, using VAV2 (Phospho-Tyr142) Antibody. The picture on the right is blocked with the phospho peptide.



Western blot analysis of lysates from HeLa cells and K562 cells treated with TNF 20ng/ml 30', using VAV2 (Phospho-Tyr142) Antibody. The lane on the right is blocked with the phospho peptide.



Immunofluorescence analysis of NIH/3T3 cells, using VAV2 (Phospho-Tyr142) Antibody. The picture on the right is blocked with the phospho peptide.

This product is suitable for in-vitro studies under the RESEARCH USE ONLY [RUO] licence. This product must not be used as for diagnostic or other medical purposes.  
St John's Laboratory Ltd, Knowledge Dock Business Centre, University Way, London, E16 2RD | Tel: 0208 223 3081