

Anti-Phospho-MUC1-Tyr1229 antibody (1170-1250) (STJ91106)

STJ91106

GENERAL INFORMATION

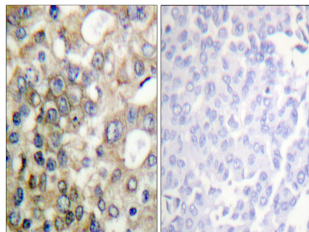
Product Type	Primary antibodies
Short Description	Rabbit polyclonal antibody anti-Phospho-Mucin-1-Tyr1229 (1170-1250) is suitable for use in Western Blot, Immunohistochemistry, Immunofluorescence, Immunocytochemistry and ELISA research applications.
Applications	WB, IHC-P, IF, ICC, ELISA
Host/Source	Rabbit
Reactivity	Human, Rat, Mouse

PRODUCT PROPERTIES

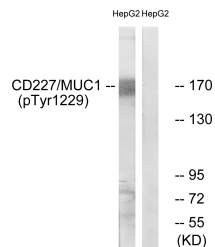
Clonality	Polyclonal
Clone ID	
Concentration	1 mg/mL
Conjugation	Unconjugated
Purification	The antibody was affinity-purified from rabbit anti-serum by affinity-chromatography.
Dilution Range	WB 1:500-1:2000 IHC 1:100-1:300 IF 1:200-1:1000 ELISA 1:10000
Formulation	PBS, 50% Glycerol, 0.5% BSA and 0.02% Sodium Azide.
Isotype	IgG
Storage Instruction	Store at -20°C for up to 1 year from the date of receipt, and avoid repeat freeze-thaw cycles.

TARGET INFORMATION

Gene ID	4582
Gene Symbol	MUC1
Uniprot ID	MUC1_HUMAN
Immunogen	The antiserum was produced against synthesized peptide derived from human CD227/MUC1 around the phosphorylation site of Tyr1229 at amino acid range 1201-1250
Immunogen Region	1170-1250
Specificity	Phospho-MUC1-Tyr1229 polyclonal antibody (Mucin-1) binds to endogenous Mucin-1 at the amino acid region 1170-1250 only when phosphorylated at Tyr1229.
Immunogen Sequence	



Immunohistochemistry analysis of paraffin-embedded human breast carcinoma, using CD227/MUC1 (Phospho-Tyr1229) Antibody. The picture on the right is blocked with the phospho peptide.



Western blot analysis of lysates from HepG2 cells treated with PMA 125ng/ml 30', using CD227/MUC1 (Phospho-Tyr1229) Antibody. The lane on the right is blocked with the phospho peptide.



Immunofluorescence analysis of HepG2 cells, using CD227/MUC1 (Phospho-Tyr1229) Antibody. The picture on the right is blocked with the phospho peptide.