

Anti-Phospho-FANCA-Ser1149 antibody (1090-1170) (STJ91103)

STJ91103

GENERAL INFORMATION

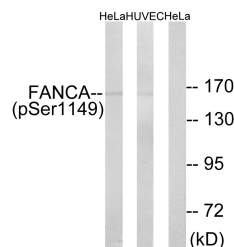
Product Type	Primary antibodies
Short Description	Rabbit polyclonal antibody anti-Phospho-Fanconi Anemia Group A Protein-Ser1149 (1090-1170) is suitable for use in Western Blot, Immunohistochemistry, Immunofluorescence, Immunocytochemistry and ELISA research applications.
Applications	WB, IHC-P, IF, ICC, ELISA
Host/Source	Rabbit
Reactivity	Human, Rat, Mouse

PRODUCT PROPERTIES

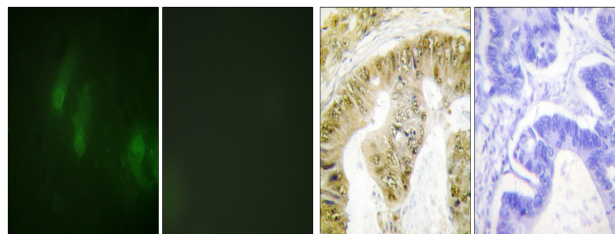
Clonality	Polyclonal
Clone ID	
Concentration	1 mg/mL
Conjugation	Unconjugated
Purification	The antibody was affinity-purified from rabbit anti-serum by affinity-chromatography.
Dilution	WB 1:500-1:2000
Range	IHC 1:100-1:300 IF 1:200-1:1000 ELISA 1:5000
Formulation	PBS, 50% Glycerol, 0.5% BSA and 0.02% Sodium Azide.
Isotype	IgG
Storage Instruction	Store at -20°C for up to 1 year from the date of receipt, and avoid repeat freeze-thaw cycles.

TARGET INFORMATION

Gene ID	2175
Gene Symbol	FANCA
Uniprot ID	FANCA_HUMAN
Immunogen	The antiserum was produced against synthesized peptide derived from human FANCA around the phosphorylation site of Ser1149 at amino acid range 1121-1170
Immunogen Region	1090-1170
Specificity	Phospho-FANCA-Ser1149 polyclonal antibody (Fanconi Anemia Group A Protein) binds to endogenous Fanconi Anemia Group A Protein at the amino acid region 1090-1170 only when phosphorylated at Ser1149.
Immunogen Sequence	

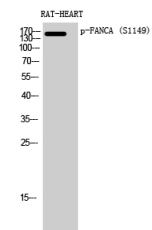


Western blot analysis of lysates from HeLa cells treated with IGF 100ng/ml 10' and HUVEC cells treated with EGF 200ng/ml 30' using FANCA (Phospho-Ser1149) Antibody. The lane on the right is blocked with the phospho peptide.



Immunofluorescence analysis of HeLa cells, using FANCA (Phospho-Ser1149) Antibody. The picture on the right is blocked with the phospho peptide.

Immunohistochemistry analysis of paraffin-embedded human colon carcinoma, using FANCA (Phospho-Ser1149) Antibody. The picture on the right is blocked with the phospho peptide.



Western blot analysis of RAT-HEART cells using Phospho-FANCA (S1149) Polyclonal Antibody diluted at 1: 500

This product is suitable for in-vitro studies under the RESEARCH USE ONLY [RUO] licence. This product must not be used as for diagnostic or other medical purposes.

St John's Laboratory Ltd, Knowledge Dock Business Centre, University Way, London, E16 2RD | Tel: 0208 223 3081