

Anti-Phospho-SCNN1B-Thr615 antibody (550-630) (STJ91101)

STJ91101

GENERAL INFORMATION

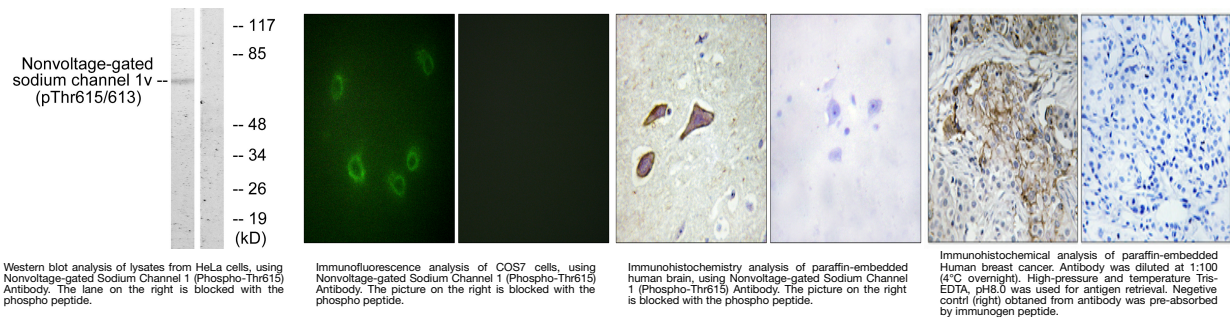
Product Type	Primary antibodies
Short Description	Rabbit polyclonal antibody anti-Phospho-Amiloride-Sensitive Sodium Channel Subunit Beta-Thr615 (550-630) is suitable for use in Western Blot, Immunohistochemistry, Immunofluorescence, Immunocytochemistry and ELISA research applications.
Applications	WB, IHC-P, IF, ICC, ELISA
Host/Source	Rabbit
Reactivity	Human, Mouse, Rat

PRODUCT PROPERTIES

Clonality	Polyclonal
Clone ID	
Concentration	1 mg/mL
Conjugation	Unconjugated
Purification	The antibody was affinity-purified from rabbit anti-serum by affinity-chromatography.
Dilution Range	WB 1:500-1:2000 IHC 1:100-1:300 IF 1:200-1:1000 ELISA 1:10000
Formulation	PBS, 50% Glycerol, 0.5% BSA and 0.02% Sodium Azide.
Isotype	IgG
Storage Instruction	Store at -20°C for up to 1 year from the date of receipt, and avoid repeat freeze-thaw cycles.

TARGET INFORMATION

Gene ID	6338
Gene Symbol	SCNN1B
Uniprot ID	SCNNB_HUMAN
Immunogen	The antiserum was produced against synthesized peptide derived from human Nonvoltage-gated Sodium Channel 1 around the phosphorylation site of Thr615 at amino acid range 581-630
Immunogen Region	550-630
Specificity	Phospho-SCNN1B-Thr615 polyclonal antibody (Amiloride-Sensitive Sodium Channel Subunit Beta) binds to endogenous Amiloride-Sensitive Sodium Channel Subunit Beta at the amino acid region 550-630 only when phosphorylated at Thr615.
Immunogen Sequence	



This product is suitable for in-vitro studies under the RESEARCH USE ONLY [RUO] licence. This product must not be used as for diagnostic or other medical purposes.
 St John's Laboratory Ltd, Knowledge Dock Business Centre, University Way, London, E16 2RD | Tel: 0208 223 3081