

Anti-Phospho-CXCR2-Ser347 antibody (290-370) (STJ91096)

STJ91096

GENERAL INFORMATION

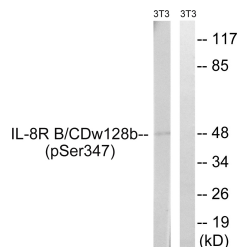
Product Type	Primary antibodies
Short Description	Rabbit polyclonal antibody anti-Phospho-C-X-C Chemokine Receptor Type 2-Ser347 (290-370) is suitable for use in Western Blot, Immunohistochemistry, Immunofluorescence, Immunocytochemistry and ELISA research applications.
Applications	WB, IHC-P, IF, ICC, ELISA
Host/Source	Rabbit
Reactivity	Human, Mouse

PRODUCT PROPERTIES

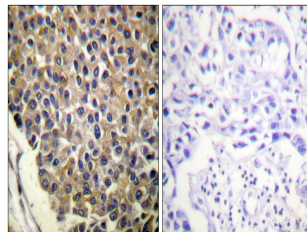
Clonality	Polyclonal
Clone ID	
Concentration	1 mg/mL
Conjugation	Unconjugated
Purification	The antibody was affinity-purified from rabbit anti-serum by affinity-chromatography.
Dilution Range	WB 1:500-1:2000 IHC 1:100-1:300 IF 1:200-1:1000 ELISA 1:10000
Formulation	PBS, 50% Glycerol, 0.5% BSA and 0.02% Sodium Azide.
Isotype	IgG
Storage Instruction	Store at -20°C for up to 1 year from the date of receipt, and avoid repeat freeze-thaw cycles.

TARGET INFORMATION

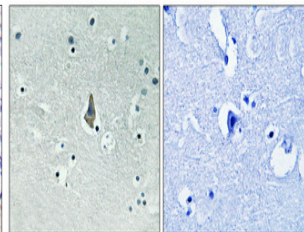
Gene ID	3579
Gene Symbol	CXCR2
Uniprot ID	CXCR2_HUMAN
Immunogen	The antiserum was produced against synthesized peptide derived from human IL-8R beta/CDw128 beta around the phosphorylation site of Ser347 at amino acid range 311-360
Immunogen Region	290-370
Specificity	Phospho-CXCR2-Ser347 polyclonal antibody (C-X-C Chemokine Receptor Type 2) binds to endogenous C-X-C Chemokine Receptor Type 2 at the amino acid region 290-370 only when phosphorylated at Ser347.
Immunogen Sequence	



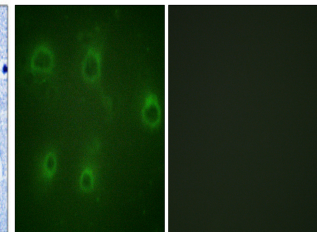
Western blot analysis of lysates from NIH/3T3 cells treated with PMA 125ng/ml 30 using IL-8R beta/CDw128 beta (Phospho-Ser347) Antibody. The lane on the right is blocked with the phospho peptide.



Immunohistochemistry analysis of paraffin-embedded human breast carcinoma, using IL-8R beta/CDw128 beta (Phospho-Ser347) Antibody. The picture on the right is blocked with the phospho peptide.



Immunohistochemical analysis of paraffin-embedded Human brain. Antibody was diluted at 1:100 (4°C overnight). High-pressure and temperature Tris-EDTA, pH8.0 was used for antigen retrieval. Negative control (right) obtained from antibody was pre-absorbed by immunogen peptide.



Immunofluorescence analysis of COS7 cells, using IL-8R beta/CDw128 beta (Phospho-Ser347) Antibody. The picture on the right is blocked with the phospho peptide.

This product is suitable for in-vitro studies under the RESEARCH USE ONLY [RUO] licence. This product must not be used as for diagnostic or other medical purposes.
St John's Laboratory Ltd, Knowledge Dock Business Centre, University Way, London, E16 2RD | Tel: 0208 223 3081