

Anti-Phospho-KCNIP3-Ser63 antibody (40-120) (STJ91090)

STJ91090

GENERAL INFORMATION

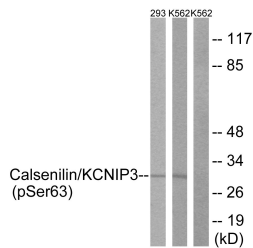
Product Type	Primary antibodies
Short Description	Rabbit polyclonal antibody anti-Phospho-Calsenilin-Ser63 (40-120) is suitable for use in Western Blot, Immunohistochemistry, Immunofluorescence, Immunocytochemistry and ELISA research applications.
Applications	WB, IHC-P, IF, ICC, ELISA
Host/Source	Rabbit
Reactivity	Human, Mouse

PRODUCT PROPERTIES

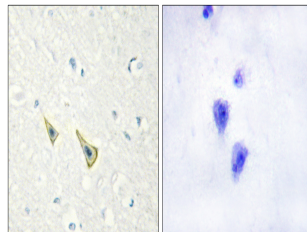
Clonality	Polyclonal
Clone ID	
Concentration	1 mg/mL
Conjugation	Unconjugated
Purification	The antibody was affinity-purified from rabbit anti-serum by affinity-chromatography.
Dilution Range	WB 1:500-1:2000 IHC 1:100-1:300 IF 1:200-1:1000 ELISA 1:20000
Formulation	PBS, 50% Glycerol, 0.5% BSA and 0.02% Sodium Azide.
Isotype	IgG
Storage Instruction	Store at -20°C for up to 1 year from the date of receipt, and avoid repeat freeze-thaw cycles.

TARGET INFORMATION

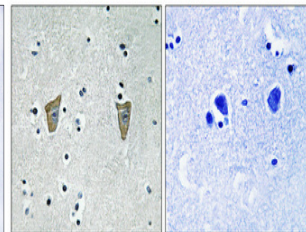
Gene ID	30818
Gene Symbol	KCNIP3
Uniprot ID	CSEN_HUMAN
Immunogen	The antiserum was produced against synthesized peptide derived from human Calsenilin/KCNIP3 around the phosphorylation site of Ser63 at amino acid range 29-78
Immunogen Region	40-120
Specificity	Phospho-KCNIP3-Ser63 polyclonal antibody (Calsenilin) binds to endogenous Calsenilin at the amino acid region 40-120 only when phosphorylated at Ser63.
Immunogen Sequence	



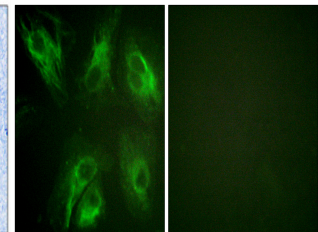
Western blot analysis of lysates from K562 cells treated with forskolin 40nM 30' and 293 cells treated with PMA 125ng/ml 30', using Calsenilin/KCNIP3 (Phospho-Ser63) Antibody. The lane on the right is blocked with the phospho peptide.



Immunohistochemistry analysis of paraffin-embedded human brain, using Calsenilin/KCNIP3 (Phospho-Ser63) Antibody. The picture on the right is blocked with the phospho peptide.



Immunohistochemical analysis of paraffin-embedded Human brain. Antibody was diluted at 1:100 (4°C overnight). High-pressure and temperature Tris-EDTA, pH8.0 was used for antigen retrieval. Negative control (right) obtained from antibody was pre-absorbed by immunogen peptide.



Immunofluorescence analysis of HeLa cells, using Calsenilin/KCNIP3 (Phospho-Ser63) Antibody. The picture on the right is blocked with the phospho peptide.

This product is suitable for in-vitro studies under the RESEARCH USE ONLY [RUO] licence. This product must not be used as for diagnostic or other medical purposes.
St John's Laboratory Ltd, Knowledge Dock Business Centre, University Way, London, E16 2RD | Tel: 0208 223 3081