

Anti-Phospho-AURKB-Thr232 antibody (170-250) (STJ91089)

STJ91089

GENERAL INFORMATION

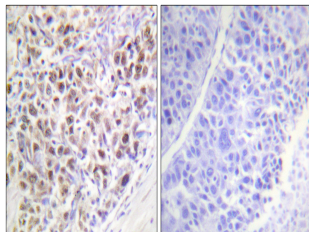
Product Type	Primary antibodies
Short Description	Rabbit polyclonal antibody anti-Phospho-Aurora Kinase B-Thr232 (170-250) is suitable for use in Western Blot, Immunohistochemistry, Immunofluorescence, Immunocytochemistry and ELISA research applications.
Applications	WB, IHC-P, IF, ICC, ELISA
Host/Source	Rabbit
Reactivity	Human, Mouse, Rat, Monkey

PRODUCT PROPERTIES

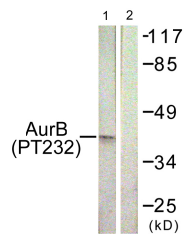
Clonality	Polyclonal
Clone ID	
Concentration	1 mg/mL
Conjugation	Unconjugated
Purification	The antibody was affinity-purified from rabbit anti-serum by affinity-chromatography.
Dilution Range	WB 1:500-1:2000 IHC 1:100-1:300 IF 1:200-1:1000 ELISA 1:20000
Formulation	PBS, 50% Glycerol, 0.5% BSA and 0.02% Sodium Azide.
Isotype	IgG
Storage Instruction	Store at -20°C for up to 1 year from the date of receipt, and avoid repeat freeze-thaw cycles.

TARGET INFORMATION

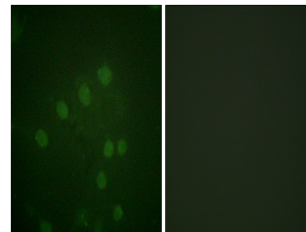
Gene ID	9212
Gene Symbol	AURKB
Uniprot ID	AURKB_HUMAN
Immunogen	The antiserum was produced against synthesized peptide derived from human AurB around the phosphorylation site of Thr232 at amino acid range 198-247
Immunogen Region	170-250
Specificity	Phospho-AURKB-Thr232 polyclonal antibody (Aurora Kinase B) binds to endogenous Aurora Kinase B at the amino acid region 170-250 only when phosphorylated at Thr232.
Immunogen Sequence	



Immunohistochemistry analysis of paraffin-embedded human liver carcinoma, using AurB (Phospho-Thr232) Antibody. The picture on the right is blocked with the phospho peptide.



Western blot analysis of lysates from COS7 cells treated with Nocodazole 1µg/ml 16h, using AurB (Phospho-Thr232) Antibody. The lane on the right is blocked with the phospho peptide.



Immunofluorescence analysis of HepG2 cells, using AurB (Phospho-Thr232) Antibody. The picture on the right is blocked with the phospho peptide.