

Anti-Phospho-Stat5a/b-Ser726/731 antibody (660-740) (STJ91088)

STJ91088

GENERAL INFORMATION

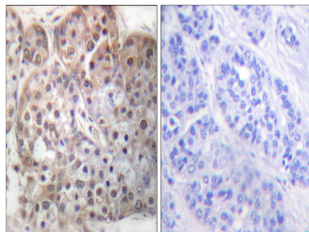
Product Type	Primary antibodies
Short Description	Rabbit polyclonal antibody anti-Phospho-Signal transducer and activator of transcription 5A and Signal transducer and activator of transcription 5B-Ser726/731 (660-740) is suitable for use in Western Blot, Immunohistochemistry, Immunofluorescence, Im
Applications	WB, IHC-P, IF, ICC, ELISA
Host/Source	Rabbit
Reactivity	Human, Mouse, Rat

PRODUCT PROPERTIES

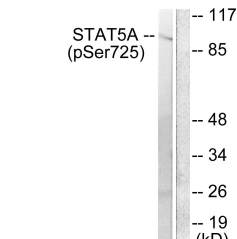
Clonality	Polyclonal
Clone ID	
Concentration	1 mg/mL
Conjugation	Unconjugated
Purification	The antibody was affinity-purified from rabbit anti-serum by affinity-chromatography.
Dilution Range	WB 1:500-1:2000 IHC 1:100-1:300 IF 1:200-1:1000 ELISA 1:20000
Formulation	PBS, 50% Glycerol, 0.5% BSA and 0.02% Sodium Azide.
Isotype	IgG
Storage Instruction	Store at -20°C for up to 1 year from the date of receipt, and avoid repeat freeze-thaw cycles.

TARGET INFORMATION

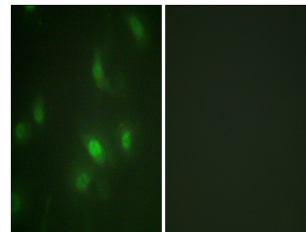
Gene ID	6777 6776
Gene Symbol	STAT5B STAT5A
Uniprot ID	STA5B_HUMAN STA5A_HUMAN
Immunogen	The antiserum was produced against synthesized peptide derived from human STAT5A/B around the phosphorylation site of Ser725/730 at amino acid range 696-745
Immunogen Region	660-740
Specificity	Phospho-Stat5a/b-Ser726/731 polyclonal antibody (Signal transducer and activator of transcription 5A and Signal transducer and activator of transcription 5B) binds to endogenous Signal transducer and activator of transcription 5A and Signal transduce
Immunogen Sequence	



Immunohistochemistry analysis of paraffin-embedded human breast carcinoma, using STAT5A/B (Phospho-Ser725/730) Antibody. The picture on the right is blocked with the phospho peptide.



Western blot analysis of lysates from Jurkat cells treated with EGF 200ng/ml 30', using STAT5A/B (Phospho-Ser725/730) Antibody. The lane on the right is blocked with the phospho peptide.



Immunofluorescence analysis of HepG2 cells, using STAT5A/B (Phospho-Ser725/730) Antibody. The picture on the right is blocked with the phospho peptide.

This product is suitable for in-vitro studies under the RESEARCH USE ONLY [RUO] licence. This product must not be used as for diagnostic or other medical purposes.
St John's Laboratory Ltd, Knowledge Dock Business Centre, University Way, London, E16 2RD | Tel: 0208 223 3081