

Anti-Phospho-ERBB3-Tyr1222 antibody (1160-1240) (STJ91083)

STJ91083

GENERAL INFORMATION

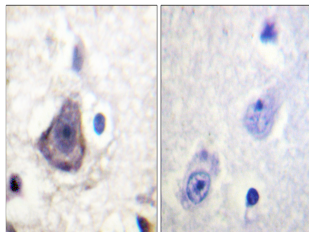
Product Type	Primary antibodies
Short Description	Rabbit polyclonal antibody anti-Phospho-Receptor Tyrosine-Protein Kinase Erbb-3-Tyr1222 (1160-1240) is suitable for use in Western Blot, Immunohistochemistry, Immunofluorescence, Immunocytochemistry and ELISA research applications.
Applications	WB, IHC-P, IF, ICC, ELISA
Host/Source	Rabbit
Reactivity	Human, Mouse, Rat

PRODUCT PROPERTIES

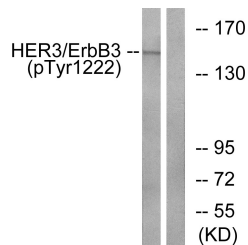
Clonality	Polyclonal
Clone ID	
Concentration	1 mg/mL
Conjugation	Unconjugated
Purification	The antibody was affinity-purified from rabbit anti-serum by affinity-chromatography.
Dilution Range	WB 1:500-1:2000 IHC 1:100-1:300 IF 1:200-1:1000 ELISA 1:20000
Formulation	PBS, 50% Glycerol, 0.5% BSA and 0.02% Sodium Azide.
Isotype	IgG
Storage Instruction	Store at -20°C for up to 1 year from the date of receipt, and avoid repeat freeze-thaw cycles.

TARGET INFORMATION

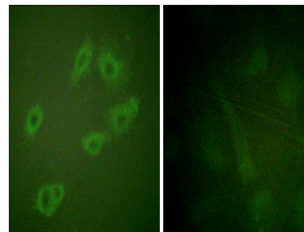
Gene ID	2065
Gene Symbol	ERBB3
Uniprot ID	ERBB3_HUMAN
Immunogen	The antiserum was produced against synthesized peptide derived from human HER3 around the phosphorylation site of Tyr1222 at amino acid range 1191-1240
Immunogen Region	1160-1240
Specificity	Phospho-ERBB3-Tyr1222 polyclonal antibody (Receptor Tyrosine-Protein Kinase Erbb-3) binds to endogenous Receptor Tyrosine-Protein Kinase Erbb-3 at the amino acid region 1160-1240 only when phosphorylated at Tyr1222.
Immunogen Sequence	



Immunohistochemistry analysis of paraffin-embedded human brain, using HER3 (Phospho-Tyr1222) Antibody. The picture on the right is blocked with the phospho peptide.



Western blot analysis of lysates from HUVEC cells treated with EGF 200ng/ml 30', using HER3 (Phospho-Tyr1222) Antibody. The lane on the right is blocked with the phospho peptide.



Immunofluorescence analysis of HUVEC cells, using HER3 (Phospho-Tyr1222) Antibody. The picture on the right is blocked with the phospho peptide.

This product is suitable for in-vitro studies under the RESEARCH USE ONLY [RUO] licence. This product must not be used as for diagnostic or other medical purposes.
St John's Laboratory Ltd, Knowledge Dock Business Centre, University Way, London, E16 2RD | Tel: 0208 223 3081