

Anti-Phospho-BCR-Tyr360 antibody (300-380) (STJ91065)

STJ91065

GENERAL INFORMATION

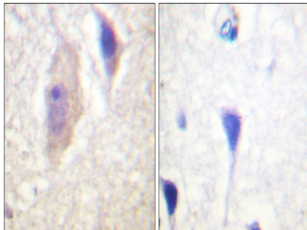
Product Type	Primary antibodies
Short Description	Rabbit polyclonal antibody anti-Phospho-Breakpoint Cluster Region Protein-Tyr360 (300-380) is suitable for use in Western Blot, Immunohistochemistry, Immunofluorescence, Immunocytochemistry and ELISA research applications.
Applications	WB, IHC-P, IF, ICC, ELISA
Host/Source	Rabbit
Reactivity	Human, Mouse, Monkey

PRODUCT PROPERTIES

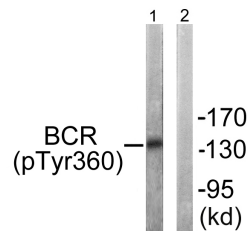
Clonality	Polyclonal
Clone ID	
Concentration	1 mg/mL
Conjugation	Unconjugated
Purification	The antibody was affinity-purified from rabbit anti-serum by affinity-chromatography.
Dilution Range	WB 1:500-1:2000 IHC 1:100-1:300 IF 1:200-1:1000 ELISA 1:40000
Formulation	PBS, 50% Glycerol, 0.5% BSA and 0.02% Sodium Azide.
Isotype	IgG
Storage Instruction	Store at -20°C for up to 1 year from the date of receipt, and avoid repeat freeze-thaw cycles.

TARGET INFORMATION

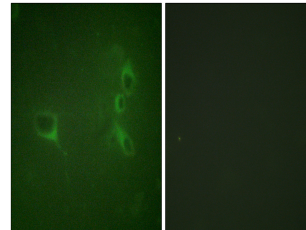
Gene ID	613
Gene Symbol	BCR
Uniprot ID	BCR_HUMAN
Immunogen	The antiserum was produced against synthesized peptide derived from human Bcr around the phosphorylation site of Tyr360 at amino acid range 331-380
Immunogen Region	300-380
Specificity	Phospho-BCR-Tyr360 polyclonal antibody (Breakpoint Cluster Region Protein) binds to endogenous Breakpoint Cluster Region Protein at the amino acid region 300-380 only when phosphorylated at Tyr360.
Immunogen Sequence	



Immunohistochemistry analysis of paraffin-embedded human brain, using Bcr (Phospho-Tyr360) Antibody. The picture on the right is blocked with the phospho peptide.



Western blot analysis of lysates from COS7 cells, using Bcr (Phospho-Tyr360) Antibody. The lane on the right is blocked with the phospho peptide.



Immunofluorescence analysis of NIH/3T3 cells, using Bcr (Phospho-Tyr360) Antibody. The picture on the right is blocked with the phospho peptide.

This product is suitable for in-vitro studies under the RESEARCH USE ONLY [RUO] licence. This product must not be used as for diagnostic or other medical purposes.
St John's Laboratory Ltd, Knowledge Dock Business Centre, University Way, London, E16 2RD | Tel: 0208 223 3081