

Anti-Phospho-NPM1-Thr199 antibody (140-220) (STJ91062)

STJ91062

GENERAL INFORMATION

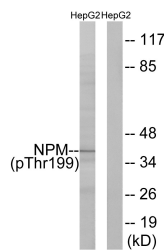
Product Type	Primary antibodies
Short Description	Rabbit polyclonal antibody anti-Phospho-Nucleophosmin-Thr199 (140-220) is suitable for use in Western Blot, Immunohistochemistry, Immunofluorescence, Immunocytochemistry and ELISA research applications.
Applications	WB, IHC-P, IF, ICC, ELISA
Host/Source	Rabbit
Reactivity	Human, Mouse, Rat

PRODUCT PROPERTIES

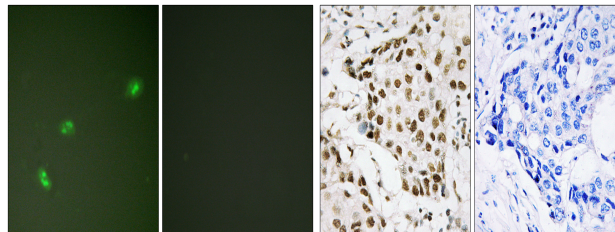
Clonality	Polyclonal
Clone ID	
Concentration	1 mg/mL
Conjugation	Unconjugated
Purification	The antibody was affinity-purified from rabbit anti-serum by affinity-chromatography.
Dilution Range	WB 1:500-1:2000 IHC 1:100-1:300 IF 1:200-1:1000 ELISA 1:40000
Formulation	PBS, 50% Glycerol, 0.5% BSA and 0.02% Sodium Azide.
Isotype	IgG
Storage Instruction	Store at -20°C for up to 1 year from the date of receipt, and avoid repeat freeze-thaw cycles.

TARGET INFORMATION

Gene ID	4869
Gene Symbol	NPM1
Uniprot ID	NPM_HUMAN
Immunogen	The antiserum was produced against synthesized peptide derived from human NPM around the phosphorylation site of Thr199 at amino acid range 171-220
Immunogen Region	140-220
Specificity	Phospho-NPM1-Thr199 polyclonal antibody (Nucleophosmin) binds to endogenous Nucleophosmin at the amino acid region 140-220 only when phosphorylated at Thr199.
Immunogen Sequence	

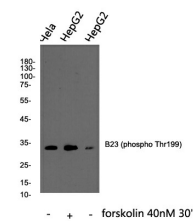


Western blot analysis of lysates from HepG2 cells, using NPM (Phospho-Thr199) Antibody. The lane on the right is blocked with the phospho peptide.



Immunofluorescence analysis of HeLa cells treated with EGF 200nM 5', using NPM (Phospho-Thr199) Antibody. The picture on the right is blocked with the phospho peptide.

Immunohistochemistry analysis of paraffin-embedded human breast carcinoma, using NPM (Phospho-Thr199) Antibody. The picture on the right is blocked with the phospho peptide.



Western blot analysis of B23 (phospho Thr199) Polyclonal Antibody, using HeLa, HepG2 cell treated or untreated with forskolin 40nM 30', +4°C over night, secondary antibody (cat: NA) was diluted at 1:10000, 37°C 1hour.

This product is suitable for in-vitro studies under the RESEARCH USE ONLY [RUO] licence. This product must not be used as for diagnostic or other medical purposes.
St John's Laboratory Ltd, Knowledge Dock Business Centre, University Way, London, E16 2RD | Tel: 0208 223 3081