

Anti-Phospho-STK11-Ser428 antibody (370-450) (STJ91060)

STJ91060

GENERAL INFORMATION

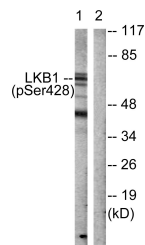
Product Type	Primary antibodies
Short Description	Rabbit polyclonal antibody anti-Phospho-Serine/Threonine-Protein Kinase Stk11-Ser428 (370-450) is suitable for use in Western Blot, Immunohistochemistry, Immunofluorescence, Immunocytochemistry and ELISA research applications.
Applications	WB, IHC-P, IF, ICC, ELISA
Host/Source	Rabbit
Reactivity	Human, Mouse, Bovine

PRODUCT PROPERTIES

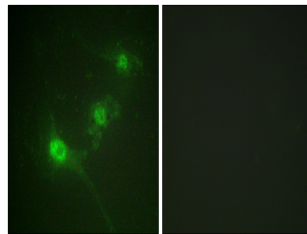
Clonality	Polyclonal
Clone ID	
Concentration	1 mg/mL
Conjugation	Unconjugated
Purification	The antibody was affinity-purified from rabbit anti-serum by affinity-chromatography.
Dilution Range	WB 1:500-1:2000 IHC 1:100-1:300 IF 1:200-1:1000 ELISA 1:40000
Formulation	PBS, 50% Glycerol, 0.5% BSA and 0.02% Sodium Azide.
Isotype	IgG
Storage Instruction	Store at -20°C for up to 1 year from the date of receipt, and avoid repeat freeze-thaw cycles.

TARGET INFORMATION

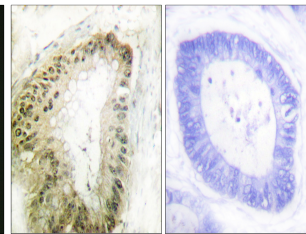
Gene ID	6794
Gene Symbol	STK11
Uniprot ID	STK11_HUMAN
Immunogen	The antiserum was produced against synthesized peptide derived from human LKB1 around the phosphorylation site of Ser428 at amino acid range 384-433
Immunogen Region	370-450
Specificity	Phospho-STK11-Ser428 polyclonal antibody (Serine/Threonine-Protein Kinase Stk11) binds to endogenous Serine/Threonine-Protein Kinase Stk11 at the amino acid region 370-450 only when phosphorylated at Ser428.
Immunogen Sequence	



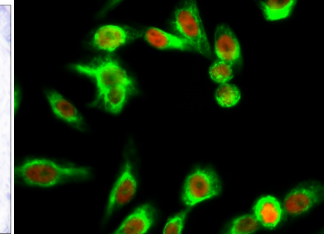
Western blot analysis of lysates from HeLa cells treated with PMA 125ng/ml 30', using LKB1 (Phospho-Ser428) Antibody. The lane on the right is blocked with the phospho peptide.



Immunofluorescence analysis of NIH/3T3 cells, using LKB1 (Phospho-Ser428) Antibody. The picture on the right is blocked with the phospho peptide.



Immunohistochemistry analysis of paraffin-embedded human colon carcinoma, using LKB1 (Phospho-Ser428) Antibody. The picture on the right is blocked with the phospho peptide.



Immunofluorescence analysis of HeLa cell. 1, LKB1 (phospho Ser428) Polyclonal Antibody (red) was diluted at 1:200 (4°C overnight). NSE monoclonal antibody (13E2) (green) was diluted at 1:200 (4°C overnight). 2, Goat Anti Rabbit Alexa Fluor 594 Catalog: (NA) was diluted at 1:1000 (room temperature, 50min). Goat Anti Mouse Alexa Fluor 488 Catalog: (NA) was diluted at 1:1000 (room temperature, 50min).

This product is suitable for in-vitro studies under the RESEARCH USE ONLY [RUO] licence. This product must not be used as for diagnostic or other medical purposes.
St John's Laboratory Ltd, Knowledge Dock Business Centre, University Way, London, E16 2RD | Tel: 0208 223 3081