

Anti-Phospho-RPS6-Ser240 antibody (180-260) (STJ91053)

STJ91053

GENERAL INFORMATION

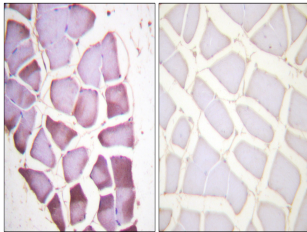
Product Type	Primary antibodies
Short Description	Rabbit polyclonal antibody anti-Phospho-40s Ribosomal Protein S6-Ser240 (180-260) is suitable for use in Western Blot, Immunohistochemistry, Immunofluorescence, Immunocytochemistry and ELISA research applications.
Applications	WB, IHC-P, IF, ICC, ELISA
Host/Source	Rabbit
Reactivity	Human, Mouse, Rat

PRODUCT PROPERTIES

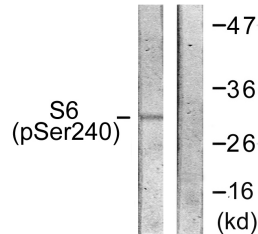
Clonality	Polyclonal
Clone ID	
Concentration	1 mg/mL
Conjugation	Unconjugated
Purification	The antibody was affinity-purified from rabbit anti-serum by affinity-chromatography.
Dilution	WB 1:500-1:2000
Range	IHC 1:100-1:300 IF 1:200-1:1000 ELISA 1:5000
Formulation	PBS, 50% Glycerol, 0.5% BSA and 0.02% Sodium Azide.
Isotype	IgG
Storage Instruction	Store at -20°C for up to 1 year from the date of receipt, and avoid repeat freeze-thaw cycles.

TARGET INFORMATION

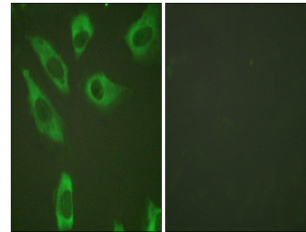
Gene ID	6194
Gene Symbol	RPS6
Uniprot ID	RS6_HUMAN
Immunogen	The antiserum was produced against synthesized peptide derived from human S6 Ribosomal Protein around the phosphorylation site of Ser240 at amino acid range 200-249
Immunogen Region	180-260
Specificity	Phospho-RPS6-Ser240 polyclonal antibody (40s Ribosomal Protein S6) binds to endogenous 40s Ribosomal Protein S6 at the amino acid region 180-260 only when phosphorylated at Ser240.
Immunogen Sequence	



Immunohistochemistry analysis of paraffin-embedded human skeletal muscle, using S6 Ribosomal Protein (Phospho-Ser240) Antibody. The picture on the right is blocked with the phospho peptide.



Western blot analysis of lysates from HeLa cells treated with TNF- α 20ng/ml 2', using S6 Ribosomal Protein (Phospho-Ser240) Antibody. The lane on the right is blocked with the phospho peptide.



Immunofluorescence analysis of HeLa cells, using S6 Ribosomal Protein (Phospho-Ser240) Antibody. The picture on the right is blocked with the phospho peptide.

This product is suitable for in-vitro studies under the RESEARCH USE ONLY [RUO] licence. This product must not be used as for diagnostic or other medical purposes.
St John's Laboratory Ltd, Knowledge Dock Business Centre, University Way, London, E16 2RD | Tel: 0208 223 3081