

## Anti-Phospho-PPP2CA-Tyr307 antibody (250-330) (STJ91049)

STJ91049

### GENERAL INFORMATION

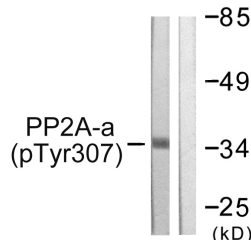
<b>Product Type</b>	Primary antibodies
<b>Short Description</b>	Rabbit polyclonal antibody anti-Phospho-Serine/Threonine-Protein Phosphatase 2a Catalytic Subunit Alpha Isoform-Tyr307 (250-330) is suitable for use in Western Blot, Immunohistochemistry, Immunofluorescence, Immunocytochemistry and ELISA research app
<b>Applications</b>	WB, IHC-P, IF, ICC, ELISA
<b>Host/Source</b>	Rabbit
<b>Reactivity</b>	Human, Mouse, Rat

### PRODUCT PROPERTIES

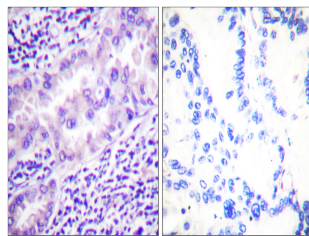
<b>Clonality</b>	Polyclonal
<b>Clone ID</b>	
<b>Concentration</b>	1 mg/mL
<b>Conjugation</b>	Unconjugated
<b>Purification</b>	The antibody was affinity-purified from rabbit anti-serum by affinity-chromatography.
<b>Dilution Range</b>	WB 1:500-1:2000 IHC 1:100-1:300 IF 1:200-1:1000 ELISA 1:5000
<b>Formulation</b>	PBS, 50% Glycerol, 0.5% BSA and 0.02% Sodium Azide.
<b>Isotype</b>	IgG
<b>Storage Instruction</b>	Store at -20°C for up to 1 year from the date of receipt, and avoid repeat freeze-thaw cycles.

### TARGET INFORMATION

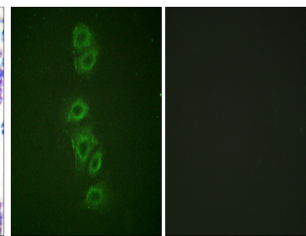
<b>Gene ID</b>	5515
<b>Gene Symbol</b>	PPP2CA
<b>Uniprot ID</b>	PP2AA_HUMAN
<b>Immunogen</b>	The antiserum was produced against synthesized peptide derived from human PP2A-alpha around the phosphorylation site of Tyr307 at amino acid range 260-309
<b>Immunogen Region</b>	250-330
<b>Specificity</b>	Phospho-PPP2CA-Tyr307 polyclonal antibody (Serine/Threonine-Protein Phosphatase 2a Catalytic Subunit Alpha Isoform) binds to endogenous Serine/Threonine-Protein Phosphatase 2a Catalytic Subunit Alpha Isoform at the amino acid region 250-330 only when
<b>Immunogen Sequence</b>	



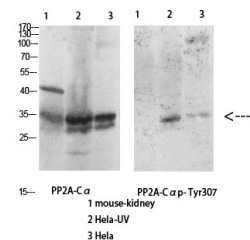
Western blot analysis of lysates from A549 cells, using PP2A-alpha (Phospho-Tyr307) Antibody. The lane on the right is blocked with the phospho peptide.



Immunohistochemistry analysis of paraffin-embedded human lung carcinoma, using PP2A-alpha (Phospho-Tyr307) Antibody. The picture on the right is blocked with the phospho peptide.



Immunofluorescence analysis of A549 cells, using PP2A-alpha (Phospho-Tyr307) Antibody. The picture on the right is blocked with the phospho peptide.



Western blot analysis of various cells using Antibody diluted at 1:1000. Secondary antibody was diluted at 1:20000