

Anti-Phospho-RPS6KB1-Ser418 antibody (360-440) (STJ91046)

STJ91046

GENERAL INFORMATION

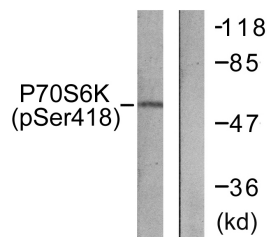
Product Type	Primary antibodies
Short Description	Rabbit polyclonal antibody anti-Phospho-Ribosomal Protein S6 Kinase Beta-1-Ser418 (360-440) is suitable for use in Western Blot, Immunohistochemistry, Immunofluorescence, Immunocytochemistry and ELISA research applications.
Applications	WB, IHC-P, IF, ICC, ELISA
Host/Source	Rabbit
Reactivity	Human, Mouse, Rat

PRODUCT PROPERTIES

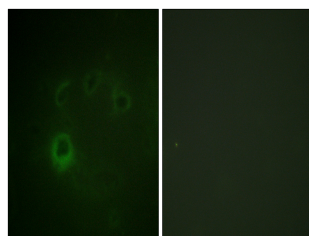
Clonality	Polyclonal
Clone ID	
Concentration	1 mg/mL
Conjugation	Unconjugated
Purification	The antibody was affinity-purified from rabbit anti-serum by affinity-chromatography.
Dilution Range	WB 1:500-1:2000 IHC 1:100-1:300 IF 1:200-1:1000 ELISA 1:20000
Formulation	PBS, 50% Glycerol, 0.5% BSA and 0.02% Sodium Azide.
Isotype	IgG
Storage Instruction	Store at -20°C for up to 1 year from the date of receipt, and avoid repeat freeze-thaw cycles.

TARGET INFORMATION

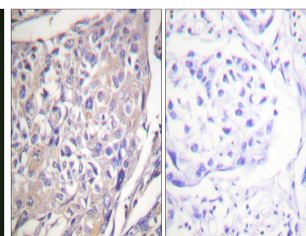
Gene ID	6198
Gene Symbol	RPS6KB1
Uniprot ID	KS6B1_HUMAN
Immunogen	The antiserum was produced against synthesized peptide derived from human p70 S6 Kinase around the phosphorylation site of Ser418 at amino acid range 384-433
Immunogen Region	360-440
Specificity	Phospho-RPS6KB1-Ser418 polyclonal antibody (Ribosomal Protein S6 Kinase Beta-1) binds to endogenous Ribosomal Protein S6 Kinase Beta-1 at the amino acid region 360-440 only when phosphorylated at Ser418.
Immunogen Sequence	



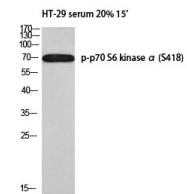
Western blot analysis of lysates from HT29 cells treated with serum 20% 15', using p70 S6 Kinase (Phospho-Ser418) Antibody. The lane on the right is blocked with the phospho peptide.



Immunofluorescence analysis of COS7 cells, using p70 S6 Kinase (Phospho-Ser418) Antibody. The picture on the right is blocked with the phospho peptide.



Immunohistochemistry analysis of paraffin-embedded human breast carcinoma, using p70 S6 Kinase (Phospho-Ser418) Antibody. The picture on the right is blocked with the phospho peptide.



Western blot analysis of HT-29 serum 20% 15' using p-p70 S6 kinase Alpha (S418) antibody. Antibody was diluted at 1:1000.