

Anti-Phospho-TP53-Ser392 antibody (320-400) (STJ91044)

STJ91044

GENERAL INFORMATION

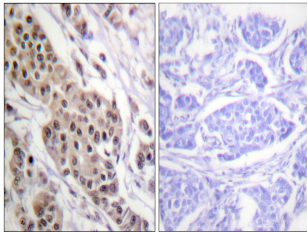
Product Type	Primary antibodies
Short Description	Rabbit polyclonal antibody anti-Phospho-Cellular Tumor antigen P53-Ser392 (320-400) is suitable for use in Western Blot, Immunohistochemistry, Immunofluorescence, Immunocytochemistry and ELISA research applications.
Applications	WB, IHC-P, IF, ICC, ELISA
Host/Source	Rabbit
Reactivity	Human, Monkey

PRODUCT PROPERTIES

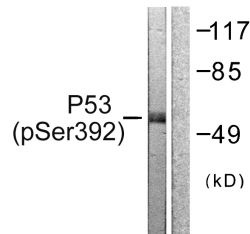
Clonality	Polyclonal
Clone ID	
Concentration	1 mg/mL
Conjugation	Unconjugated
Purification	The antibody was affinity-purified from rabbit anti-serum by affinity-chromatography.
Dilution Range	WB 1:500-1:2000 IHC 1:100-1:300 IF 1:200-1:1000 ELISA 1:5000
Formulation	PBS, 50% Glycerol, 0.5% BSA and 0.02% Sodium Azide.
Isotype	IgG
Storage Instruction	Store at -20°C for up to 1 year from the date of receipt, and avoid repeat freeze-thaw cycles.

TARGET INFORMATION

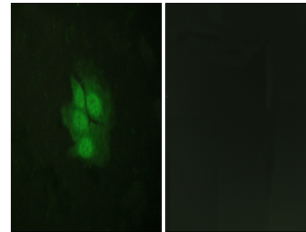
Gene ID	7157
Gene Symbol	TP53
Uniprot ID	P53_HUMAN
Immunogen	The antiserum was produced against synthesized peptide derived from human p53 around the phosphorylation site of Ser392 at amino acid range 344-393
Immunogen Region	320-400
Specificity	Phospho-TP53-Ser392 polyclonal antibody (Cellular Tumor Antigen P53) binds to endogenous Cellular Tumor Antigen P53 at the amino acid region 320-400 only when phosphorylated at Ser392.
Immunogen Sequence	



Immunohistochemistry analysis of paraffin-embedded human breast carcinoma, using p53 (Phospho-Ser392) Antibody. The picture on the right is blocked with the phospho peptide.



Western blot analysis of lysates from 293 cells treated with Etoposide 25µM 60', using p53 (Phospho-Ser392) Antibody. The lane on the right is blocked with the phospho peptide.



Immunofluorescence analysis of HeLa cells, using p53 (Phospho-Ser392) Antibody. The picture on the right is blocked with the phospho peptide.