

Anti-Phospho-LMNA-Ser392 antibody (330-410) (STJ91042)

STJ91042

GENERAL INFORMATION

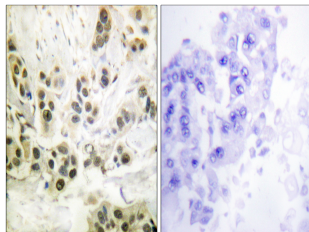
Product Type	Primary antibodies
Short Description	Rabbit polyclonal antibody anti-Phospho-Prelamin-A/C Cleaved Into-Lamin-A/C-Ser392 (330-410) is suitable for use in Western Blot, Immunohistochemistry, Immunofluorescence, Immunocytochemistry and ELISA research applications.
Applications	WB, IHC-P, IF, ICC, ELISA
Host/Source	Rabbit
Reactivity	Human, Mouse, Rat

PRODUCT PROPERTIES

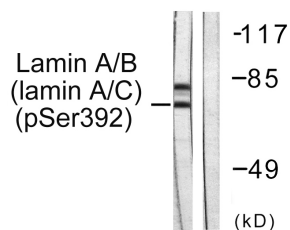
Clonality	Polyclonal
Clone ID	
Concentration	1 mg/mL
Conjugation	Unconjugated
Purification	The antibody was affinity-purified from rabbit anti-serum by affinity-chromatography.
Dilution	WB 1:500-1:2000
Range	IHC 1:100-1:300 IF 1:200-1:1000 ELISA 1:10000
Formulation	PBS, 50% Glycerol, 0.5% BSA and 0.02% Sodium Azide.
Isotype	IgG
Storage Instruction	Store at -20°C for up to 1 year from the date of receipt, and avoid repeat freeze-thaw cycles.

TARGET INFORMATION

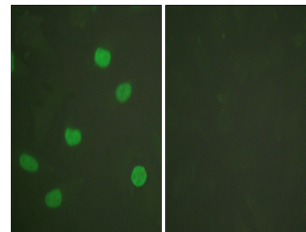
Gene ID	4000
Gene Symbol	LMNA
Uniprot ID	LMNA_HUMAN
Immunogen	The antiserum was produced against synthesized peptide derived from human Lamin A/C around the phosphorylation site of Ser392 at amino acid range 361-410
Immunogen Region	330-410
Specificity	Phospho-LMNA-Ser392 polyclonal antibody (Prelamin-A/C Cleaved Into-Lamin-A/C) binds to endogenous Prelamin-A/C Cleaved Into-Lamin-A/C at the amino acid region 330-410 only when phosphorylated at Ser392.
Immunogen Sequence	



Immunohistochemistry analysis of paraffin-embedded human breast carcinoma, using Lamin A/C (Phospho-Ser392) Antibody. The picture on the right is blocked with the phospho peptide.



Western blot analysis of lysates from HeLa cells, using Lamin A/C (Phospho-Ser392) Antibody. The lane on the right is blocked with the phospho peptide.



Immunofluorescence analysis of HeLa cells, using Lamin A/C (Phospho-Ser392) Antibody. The picture on the right is blocked with the phospho peptide.