

Anti-Phospho-CBL-Tyr774 antibody (710-790) (STJ91035)

STJ91035

GENERAL INFORMATION

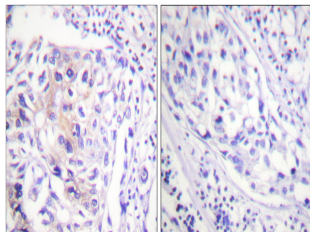
Product Type	Primary antibodies
Short Description	Rabbit polyclonal antibody anti-Phospho-E3 Ubiquitin-Protein Ligase Cbl-Tyr774 (710-790) is suitable for use in Western Blot, Immunohistochemistry, Immunofluorescence, Immunocytochemistry and ELISA research applications.
Applications	WB, IHC-P, IF, ICC, ELISA
Host/Source	Rabbit
Reactivity	Human, Mouse, Rat

PRODUCT PROPERTIES

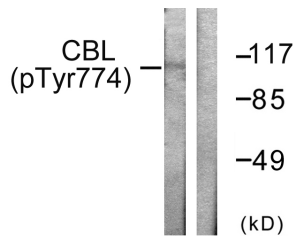
Clonality	Polyclonal
Clone ID	
Concentration	1 mg/mL
Conjugation	Unconjugated
Purification	The antibody was affinity-purified from rabbit anti-serum by affinity-chromatography.
Dilution Range	WB 1:500-1:2000 IHC 1:100-1:300 IF 1:200-1:1000 ELISA 1:5000
Formulation	PBS, 50% Glycerol, 0.5% BSA and 0.02% Sodium Azide.
Isotype	IgG
Storage Instruction	Store at -20°C for up to 1 year from the date of receipt, and avoid repeat freeze-thaw cycles.

TARGET INFORMATION

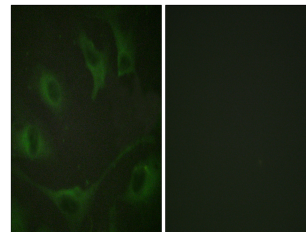
Gene ID	867
Gene Symbol	CBL
Uniprot ID	CBL_HUMAN
Immunogen	The antiserum was produced against synthesized peptide derived from human CBL around the phosphorylation site of Tyr774 at amino acid range 740-789
Immunogen Region	710-790
Specificity	Phospho-CBL-Tyr774 polyclonal antibody (E3 Ubiquitin-Protein Ligase Cbl) binds to endogenous E3 Ubiquitin-Protein Ligase Cbl at the amino acid region 710-790 only when phosphorylated at Tyr774.
Immunogen Sequence	



Immunohistochemistry analysis of paraffin-embedded human breast carcinoma, using CBL (Phospho-Tyr774) Antibody. The picture on the right is blocked with the phospho peptide.



Western blot analysis of lysates from HeLa cells treated with EGF 200ng/ml 30', using CBL (Phospho-Tyr774) Antibody. The lane on the right is blocked with the phospho peptide.



Immunofluorescence analysis of A549 cells, using CBL (Phospho-Tyr774) Antibody. The picture on the right is blocked with the phospho peptide.