

Anti-Phospho-ESPL1-Ser801 antibody (740-820) (STJ91032)

STJ91032

GENERAL INFORMATION

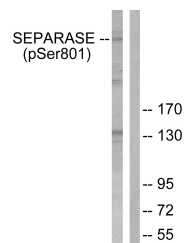
Product Type	Primary antibodies
Short Description	Rabbit polyclonal antibody anti-Phospho-Separin-Ser801 (740-820) is suitable for use in Western Blot, Immunohistochemistry, Immunofluorescence, Immunocytochemistry and ELISA research applications.
Applications	WB, IHC-P, IF, ICC, ELISA
Host/Source	Rabbit
Reactivity	Human, Mouse

PRODUCT PROPERTIES

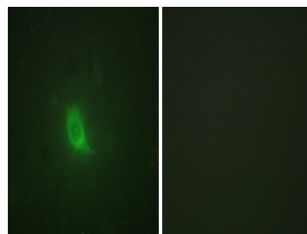
Clonality	Polyclonal
Clone ID	
Concentration	1 mg/mL
Conjugation	Unconjugated
Purification	The antibody was affinity-purified from rabbit anti-serum by affinity-chromatography.
Dilution	WB 1:500-1:2000
Range	IHC 1:100-1:300 IF 1:200-1:1000 ELISA 1:40000
Formulation	PBS, 50% Glycerol, 0.5% BSA and 0.02% Sodium Azide.
Isotype	IgG
Storage Instruction	Store at -20°C for up to 1 year from the date of receipt, and avoid repeat freeze-thaw cycles.

TARGET INFORMATION

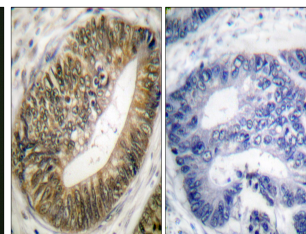
Gene ID	9700
Gene Symbol	ESPL1
Uniprot ID	ESPL1_HUMAN
Immunogen	The antiserum was produced against synthesized peptide derived from human SEPARASE around the phosphorylation site of Ser801 at amino acid range 767-816
Immunogen Region	740-820
Specificity	Phospho-ESPL1-Ser801 polyclonal antibody (Separin) binds to endogenous Separin at the amino acid region 740-820 only when phosphorylated at Ser801.
Immunogen Sequence	



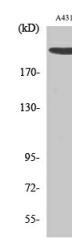
Western blot analysis of lysates from 293 cells treated with EGF 200ng/ml 30', using SEPARASE (Phospho-Ser801) Antibody. The lane on the right is blocked with the phospho peptide.



Immunofluorescence analysis of HUVEC cells, using SEPARASE (Phospho-Ser801) Antibody. The picture on the right is blocked with the phospho peptide.



Immunohistochemistry analysis of paraffin-embedded human colon carcinoma, using SEPARASE (Phospho-Ser801) Antibody. The picture on the right is blocked with the phospho peptide.



Western blot analysis of various cells using Phospho-Separase (S801) Polyclonal Antibody diluted at 1:1000