

Anti-Phospho-POLR2A-Ser1619 antibody (1560-1640) (STJ91031)

STJ91031

GENERAL INFORMATION

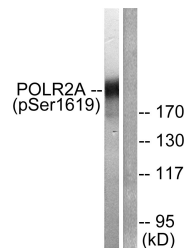
Product Type	Primary antibodies
Short Description	Rabbit polyclonal antibody anti-Phospho-Dna-Directed Rna Polymerase Ii Subunit Rpb1-Ser1619 (1560-1640) is suitable for use in Western Blot, Immunohistochemistry, Immunofluorescence, Immunocytochemistry and ELISA research applications.
Applications	WB, IHC-P, IF, ICC, ELISA
Host/Source	Rabbit
Reactivity	Human, Mouse, Rat, Monkey

PRODUCT PROPERTIES

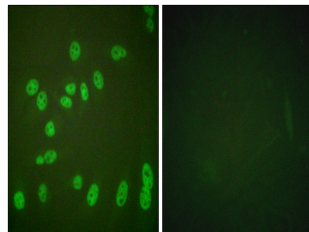
Clonality	Polyclonal
Clone ID	
Concentration	1 mg/mL
Conjugation	Unconjugated
Purification	The antibody was affinity-purified from rabbit anti-serum by affinity-chromatography.
Dilution	WB 1:500-1:2000
Range	IHC 1:100-1:300 IF 1:200-1:1000 ELISA 1:10000
Formulation	PBS, 50% Glycerol, 0.5% BSA and 0.02% Sodium Azide.
Isotype	IgG
Storage Instruction	Store at -20°C for up to 1 year from the date of receipt, and avoid repeat freeze-thaw cycles.

TARGET INFORMATION

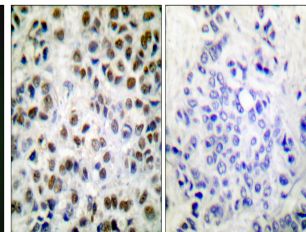
Gene ID	5430
Gene Symbol	POLR2A
Uniprot ID	RPB1_HUMAN
Immunogen	The antiserum was produced against synthesized peptide derived from human POLR2A around the phosphorylation site of Ser1619 at amino acid range 1585-1634
Immunogen Region	1560-1640
Specificity	Phospho-POLR2A-Ser1619 polyclonal antibody (Dna-Directed Rna Polymerase Ii Subunit Rpb1) binds to endogenous Dna-Directed Rna Polymerase Ii Subunit Rpb1 at the amino acid region 1560-1640 only when phosphorylated at Ser1619.
Immunogen Sequence	



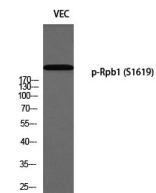
Western blot analysis of lysates from COS7 cells treated with EGF 200ng/ml 30', using POLR2A (Phospho-Ser1619) Antibody. The lane on the right is blocked with the phospho peptide.



Immunofluorescence analysis of HeLa cells treated with PMA 125ng/ml 30', using POLR2A (Phospho-Ser1619) Antibody. The picture on the right is blocked with the phospho peptide.



Immunohistochemistry analysis of paraffin-embedded human breast carcinoma, using POLR2A (Phospho-Ser1619) Antibody. The picture on the right is blocked with the phospho peptide.



Western blot analysis of VEC using p-Rpb1 (S1619) antibody. Antibody was diluted at 1:2000 cells nucleus extracted by Minute TM Cytoplasmic and Nuclear Fractionation kit (SC-003, Inventibiotec, MN, USA).

This product is suitable for in-vitro studies under the RESEARCH USE ONLY [RUO] licence. This product must not be used as for diagnostic or other medical purposes.
St John's Laboratory Ltd, Knowledge Dock Business Centre, University Way, London, E16 2RD | Tel: 0208 223 3081