

## Anti-Phospho-ERBB2-Tyr1221/Y1222 antibody (1160-1240) (STJ91025)

STJ91025

### GENERAL INFORMATION

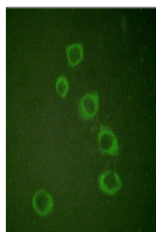
|                          |   |
|--------------------------|---|
| <b>Product Type</b>      | Primary antibodies  |
| <b>Short Description</b> | Rabbit polyclonal antibody anti-Phospho-Receptor Tyrosine-Protein Kinase Erbb-2-Tyr1221/Y1222 (1160-1240) is suitable for use in Western Blot, Immunohistochemistry, Immunofluorescence, Immunocytochemistry and ELISA research applications. |
| <b>Applications</b>      | WB, IHC-P, IF, ICC, ELISA   |
| <b>Host/Source</b>       | Rabbit  |
| <b>Reactivity</b>        | Human, Mouse, Rat, Monkey   |

### PRODUCT PROPERTIES

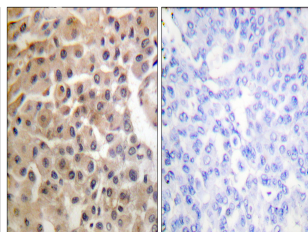
|                      |  |
|----------------------|--|
| <b>Clonality</b>     | Polyclonal   |
| <b>Clone ID</b>      |  |
| <b>Concentration</b> | 1 mg/mL  |
| <b>Conjugation</b>   | Unconjugated   |
| <b>Purification</b>  | The antibody was affinity-purified from rabbit anti-serum by affinity-chromatography.          |
| <b>Dilution</b>      | WB 1:500-1:2000  |
| <b>Range</b>         | IHC 1:100-1:300<br>IF 1:200-1:1000<br>ELISA 1:40000  |
| <b>Formulation</b>   | PBS, 50% Glycerol, 0.5% BSA and 0.02% Sodium Azide.  |
| <b>Isotype</b>       | IgG  |
| <b>Storage</b>       | Store at -20°C for up to 1 year from the date of receipt, and avoid repeat freeze-thaw cycles. |
| <b>Instruction</b>   |  |

### TARGET INFORMATION

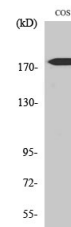
|                           |   |
|---------------------------|---|
| <b>Gene ID</b>            | 2064  |
| <b>Gene Symbol</b>        | ERBB2   |
| <b>Uniprot ID</b>         | ERBB2_HUMAN   |
| <b>Immunogen</b>          | Synthesized phospho-peptide around the phosphorylation site of human Neu (phospho Tyr1221/Y1222)  |
| <b>Immunogen Region</b>   | 1160-1240   |
| <b>Specificity</b>        | Phospho-ERBB2-Tyr1221/Y1222 polyclonal antibody (Receptor Tyrosine-Protein Kinase Erbb-2) binds to endogenous Receptor Tyrosine-Protein Kinase Erbb-2 at the amino acid region 1160-1240 only when phosphorylated at Tyr1221/Y1222. |
| <b>Immunogen Sequence</b> |   |



Immunofluorescence analysis of HuvEc cell, using HER2 (Phospho-Tyr1221+Y1222) Antibody. The lane on the right is blocked with the HER2 (Phospho-Tyr1221+Y1222) peptide.



Immunohistochemistry analysis of paraffin-embedded human breast cancer, using HER2 (Phospho-Tyr1221+Y1222) Antibody. The picture on the right is blocked with the HER2 (Phospho-Tyr1221+Y1222) peptide.



Western blot analysis of various cells using Phospho-Neu (Y1221/Y1222) Polyclonal Antibody

This product is suitable for in-vitro studies under the RESEARCH USE ONLY [RUO] licence. This product must not be used as for diagnostic or other medical purposes.  
St John's Laboratory Ltd, Knowledge Dock Business Centre, University Way, London, E16 2RD | Tel: 0208 223 3081