

## Anti-Phospho-MEF2A-Ser408 antibody (350-430) (STJ91020)

STJ91020

### GENERAL INFORMATION

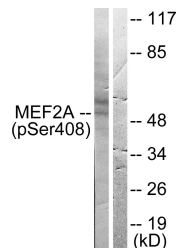
<b>Product Type</b>	Primary antibodies
<b>Short Description</b>	Rabbit polyclonal antibody anti-Phospho-Myocyte-Specific Enhancer Factor 2a-Ser408 (350-430) is suitable for use in Western Blot, Immunohistochemistry, Immunofluorescence, Immunocytochemistry and ELISA research applications.
<b>Applications</b>	WB, IHC-P, IF, ICC, ELISA
<b>Host/Source</b>	Rabbit
<b>Reactivity</b>	Human, Mouse, Rat

### PRODUCT PROPERTIES

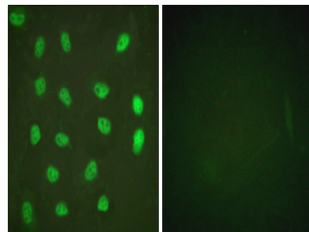
<b>Clonality</b>	Polyclonal
<b>Clone ID</b>	
<b>Concentration</b>	1 mg/mL
<b>Conjugation</b>	Unconjugated
<b>Purification</b>	The antibody was affinity-purified from rabbit anti-serum by affinity-chromatography.
<b>Dilution</b>	WB 1:500-1:2000
<b>Range</b>	IHC 1:100-1:300 IF 1:200-1:1000 ELISA 1:40000
<b>Formulation</b>	PBS, 50% Glycerol, 0.5% BSA and 0.02% Sodium Azide.
<b>Isotype</b>	IgG
<b>Storage Instruction</b>	Store at -20°C for up to 1 year from the date of receipt, and avoid repeat freeze-thaw cycles.

### TARGET INFORMATION

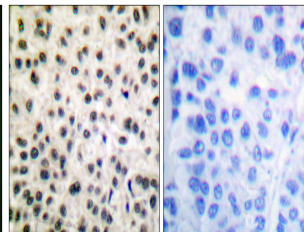
<b>Gene ID</b>	4205
<b>Gene Symbol</b>	MEF2A
<b>Uniprot ID</b>	MEF2A_HUMAN
<b>Immunogen</b>	The antiserum was produced against synthesized peptide derived from human MEF2A around the phosphorylation site of Ser408 at amino acid range 374-423
<b>Immunogen Region</b>	350-430
<b>Specificity</b>	Phospho-MEF2A-Ser408 polyclonal antibody (Myocyte-Specific Enhancer Factor 2a) binds to endogenous Myocyte-Specific Enhancer Factor 2a at the amino acid region 350-430 only when phosphorylated at Ser408.
<b>Immunogen Sequence</b>	



Western blot analysis of lysates from HeLa cells treated with PMA 125ng/ml 30', using MEF2A (Phospho-Ser408) Antibody. The lane on the right is blocked with the phospho peptide.



Immunofluorescence analysis of HeLa cells treated with PMA 125ng/ml 30', using MEF2A (Phospho-Ser408) Antibody. The picture on the right is blocked with the phospho peptide.



Immunohistochemistry analysis of paraffin-embedded human breast carcinoma, using MEF2A (Phospho-Ser408) Antibody. The picture on the right is blocked with the phospho peptide.



Western blot analysis of various cells using Phospho-MEF-2 (S408) Polyclonal Antibody cells nucleus extracted by Minus TM Cytoplasmic and Nuclear Fractionation kit (SC-003, Inventibiotech, MN, USA).

This product is suitable for in-vitro studies under the RESEARCH USE ONLY [RUO] licence. This product must not be used as for diagnostic or other medical purposes.  
St John's Laboratory Ltd, Knowledge Dock Business Centre, University Way, London, E16 2RD | Tel: 0208 223 3081