

Anti-Phospho-HSP90AB1-Ser254 antibody (200-280) (STJ91017)

GENERAL INFORMATION

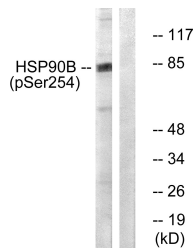
Product Type	Primary antibodies
Short Description	Rabbit polyclonal antibody anti-Phospho-Heat Shock Protein Hsp 90-Beta-Ser254 (200-280) is suitable for use in Western Blot, Immunohistochemistry, Immunofluorescence, Immunocytochemistry and ELISA research applications.
Applications	WB, IHC-P, IF, ICC, ELISA
Host/Source	Rabbit
Reactivity	Human, Mouse, Rat, Monkey

PRODUCT PROPERTIES

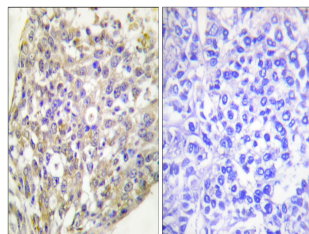
Clonality	Polyclonal
Clone ID	
Concentration	1 mg/mL
Conjugation	Unconjugated
Purification	The antibody was affinity-purified from rabbit anti-serum by affinity-chromatography.
Dilution	WB 1:500-1:2000
Range	IHC 1:100-1:300 IF 1:200-1:1000 ELISA 1:40000
Formulation	PBS, 50% Glycerol, 0.5% BSA and 0.02% Sodium Azide.
Isotype	IgG
Storage Instruction	Store at -20°C for up to 1 year from the date of receipt, and avoid repeat freeze-thaw cycles.

TARGET INFORMATION

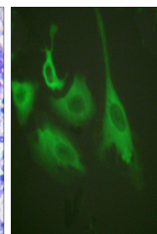
Gene ID	3326
Gene Symbol	HSP90AB1
Uniprot ID	HS90B_HUMAN
Immunogen	The antiserum was produced against synthesized peptide derived from human HSP90B around the phosphorylation site of Ser254 at amino acid range 226-275
Immunogen Region	200-280
Specificity	Phospho-HSP90AB1-Ser254 polyclonal antibody (Heat Shock Protein Hsp 90-Beta) binds to endogenous Heat Shock Protein Hsp 90-Beta at the amino acid region 200-280 only when phosphorylated at Ser254.
Immunogen Sequence	



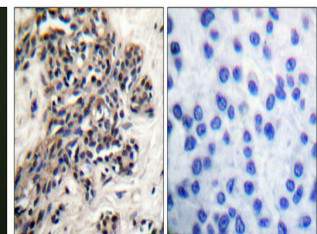
Western blot analysis of lysates from HeLa cells treated with TNF-α 10ng/ml 30', using HSP90B (Phospho-Ser254) Antibody. The lane on the right is blocked with the phospho peptide.



Immunohistochemistry analysis of paraffin-embedded human breast carcinoma, using HSP90B (Phospho-Ser254) Antibody. The picture on the right is blocked with the phospho peptide.



Immunofluorescence analysis of HeLa cells treated with TNF-α 20nM 15', using HSP90B (Phospho-Ser254) Antibody. The picture on the right is blocked with the phospho peptide.



Immunohistochemical analysis of paraffin-embedded Human breast cancer. Antibody was diluted at 1:100 (4°C overnight). High-pressure and temperature Tris-EDTA, pH8.0 was used for antigen retrieval. Negative control (right) obtained from antibody was pre-absorbed by immunogen peptide.

This product is suitable for in-vitro studies under the RESEARCH USE ONLY [RUO] licence. This product must not be used as for diagnostic or other medical purposes.
St John's Laboratory Ltd, Knowledge Dock Business Centre, University Way, London, E16 2RD | Tel: 0208 223 3081