

Anti-Phospho-YWHAZ-Ser58 antibody (40-120) (STJ91013)

STJ91013

GENERAL INFORMATION

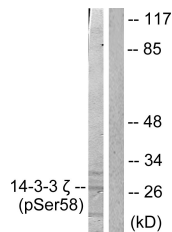
Product Type	Primary antibodies
Short Description	Rabbit polyclonal antibody anti-Phospho-14-3-3 Protein Zeta/Delta-Ser58 (40-120) is suitable for use in Western Blot, Immunohistochemistry, Immunofluorescence, Immunocytochemistry and ELISA research applications.
Applications	WB, IHC-P, IF, ICC, ELISA
Host/Source	Rabbit
Reactivity	Human, Mouse, Rat

PRODUCT PROPERTIES

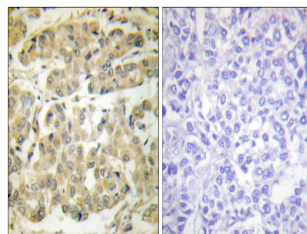
Clonality	Polyclonal
Clone ID	
Concentration	1 mg/mL
Conjugation	Unconjugated
Purification	The antibody was affinity-purified from rabbit anti-serum by affinity-chromatography.
Dilution Range	WB 1:500-1:2000 IHC 1:100-1:300 IF 1:200-1:1000 ELISA 1:40000
Formulation	PBS, 50% Glycerol, 0.5% BSA and 0.02% Sodium Azide.
Isotype	IgG
Storage Instruction	Store at -20°C for up to 1 year from the date of receipt, and avoid repeat freeze-thaw cycles.

TARGET INFORMATION

Gene ID	7534
Gene Symbol	YWHAZ
Uniprot ID	1433Z_HUMAN
Immunogen	The antiserum was produced against synthesized peptide derived from human 14-3-3 zeta around the phosphorylation site of Ser58 at amino acid range 24-73
Immunogen Region	40-120
Specificity	Phospho-YWHAZ-Ser58 polyclonal antibody (14-3-3 Protein Zeta/Delta) binds to endogenous 14-3-3 Protein Zeta/Delta at the amino acid region 40-120 only when phosphorylated at Ser58.
Immunogen Sequence	



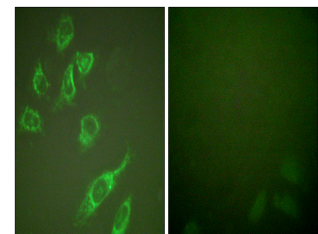
Western blot analysis of lysates from NIH/3T3 cells treated with UV 30', using 14-3-3 zeta (Phospho-Ser58) Antibody. The lane on the right is blocked with the phospho peptide.



Immunohistochemistry analysis of paraffin-embedded human breast carcinoma, using 14-3-3 zeta (Phospho-Ser58) Antibody. The picture on the right is blocked with the phospho peptide.



Western blot analysis of Jurkat cells using Phospho-14-3-3 Zeta (S58) Polyclonal Antibody diluted at 1:2000.



Immunofluorescence analysis of HeLa cells treated with PMA 125ng/ml 30', using 14-3-3 zeta (Phospho-Ser58) Antibody. The picture on the right is blocked with the phospho peptide.

This product is suitable for in-vitro studies under the RESEARCH USE ONLY [RUO] licence. This product must not be used as for diagnostic or other medical purposes.
St John's Laboratory Ltd, Knowledge Dock Business Centre, University Way, London, E16 2RD | Tel: 0208 223 3081