

Anti-Phospho-GRIA2-Ser880 antibody (820-900) (STJ91009)

STJ91009

GENERAL INFORMATION

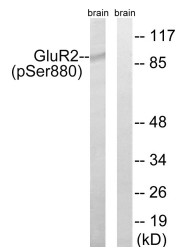
Product Type	Primary antibodies
Short Description	Rabbit polyclonal antibody anti-Phospho-Glutamate Receptor 2-Ser880 (820-900) is suitable for use in Western Blot, Immunohistochemistry, Immunofluorescence and ELISA research applications.
Applications	WB, IHC-P, IF-P, ELISA
Host/Source	Rabbit
Reactivity	Human, Mouse, Rat

PRODUCT PROPERTIES

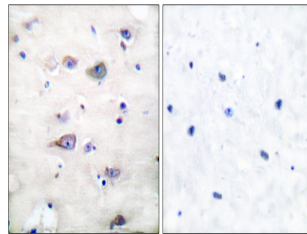
Clonality	Polyclonal
Clone ID	
Concentration	1 mg/mL
Conjugation	Unconjugated
Purification	The antibody was affinity-purified from rabbit anti-serum by affinity-chromatography.
Dilution Range	WB 1:500-1:2000 IHC 1:100-1:300 ELISA 1:20000
Formulation	PBS, 50% Glycerol, 0.5% BSA and 0.02% Sodium Azide.
Isotype	IgG
Storage Instruction	Store at -20°C for up to 1 year from the date of receipt, and avoid repeat freeze-thaw cycles.

TARGET INFORMATION

Gene ID	2891
Gene Symbol	GRIA2
Uniprot ID	GRIA2_HUMAN
Immunogen	The antiserum was produced against synthesized peptide derived from human GluR2 around the phosphorylation site of Ser880 at amino acid range 834-883
Immunogen Region	820-900
Specificity	Phospho-GRIA2-Ser880 polyclonal antibody (Glutamate Receptor 2) binds to endogenous Glutamate Receptor 2 at the amino acid region 820-900 only when phosphorylated at Ser880.
Immunogen Sequence	



Western blot analysis of lysates from mouse brain, using GluR2 (Phospho-Ser880) Antibody. The lane on the right is blocked with the phospho peptide.



Immunohistochemistry analysis of paraffin-embedded human brain, using GluR2 (Phospho-Ser880) Antibody. The picture on the right is blocked with the phospho peptide.

This product is suitable for in-vitro studies under the RESEARCH USE ONLY [RUO] licence. This product must not be used as for diagnostic or other medical purposes.
St John's Laboratory Ltd, Knowledge Dock Business Centre, University Way, London, E16 2RD | Tel: 0208 223 3081