

Anti-Phospho-GRIA1-Ser863 antibody (800-880) (STJ91008)

STJ91008

GENERAL INFORMATION

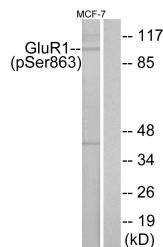
Product Type	Primary antibodies
Short Description	Rabbit polyclonal antibody anti-Phospho-Glutamate Receptor 1-Ser863 (800-880) is suitable for use in Western Blot, Immunohistochemistry, Immunofluorescence and ELISA research applications.
Applications	WB, IHC-P, IF-P, ELISA
Host/Source	Rabbit
Reactivity	Human, Mouse, Rat

PRODUCT PROPERTIES

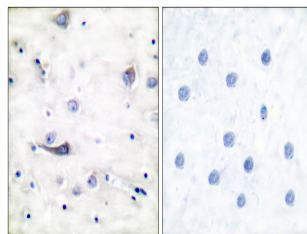
Clonality	Polyclonal
Clone ID	
Concentration	1 mg/mL
Conjugation	Unconjugated
Purification	The antibody was affinity-purified from rabbit anti-serum by affinity-chromatography.
Dilution Range	WB 1:500-1:2000 IHC 1:100-1:300 ELISA 1:40000
Formulation	PBS, 50% Glycerol, 0.5% BSA and 0.02% Sodium Azide.
Isotype	IgG
Storage Instruction	Store at -20°C for up to 1 year from the date of receipt, and avoid repeat freeze-thaw cycles.

TARGET INFORMATION

Gene ID	2890
Gene Symbol	GRIA1
Uniprot ID	GRIA1_HUMAN
Immunogen	The antiserum was produced against synthesized peptide derived from human GluR1 around the phosphorylation site of Ser863 at amino acid range 829-878
Immunogen Region	800-880
Specificity	Phospho-GRIA1-Ser863 polyclonal antibody (Glutamate Receptor 1) binds to endogenous Glutamate Receptor 1 at the amino acid region 800-880 only when phosphorylated at Ser863.
Immunogen Sequence	



Western blot analysis of lysates from MCF-7 cells, using GluR1 (Phospho-Ser863) Antibody. The lane on the right is blocked with the phospho peptide.



Immunohistochemistry analysis of paraffin-embedded human brain, using GluR1 (Phospho-Ser863) Antibody. The picture on the right is blocked with the phospho peptide.