

## Anti-Phospho-CTTN-Tyr466 antibody (410-490) (STJ91006)

STJ91006

### GENERAL INFORMATION

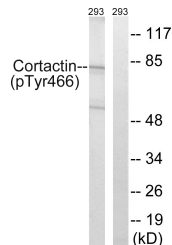
<b>Product Type</b>	Primary antibodies
<b>Short Description</b>	Rabbit polyclonal antibody anti-Phospho-Src Substrate Cortactin-Tyr466 (410-490) is suitable for use in Western Blot, Immunohistochemistry, Immunofluorescence, Immunocytochemistry and ELISA research applications.
<b>Applications</b>	WB, IHC-P, IF, ICC, ELISA
<b>Host/Source</b>	Rabbit
<b>Reactivity</b>	Human, Mouse, Rat, Monkey

### PRODUCT PROPERTIES

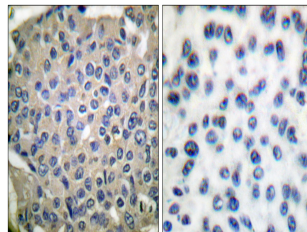
<b>Clonality</b>	Polyclonal
<b>Clone ID</b>	
<b>Concentration</b>	1 mg/mL
<b>Conjugation</b>	Unconjugated
<b>Purification</b>	The antibody was affinity-purified from rabbit anti-serum by affinity-chromatography.
<b>Dilution Range</b>	WB 1:500-1:2000 IHC 1:100-1:300 IF 1:200-1:1000 ELISA 1:20000
<b>Formulation</b>	PBS, 50% Glycerol, 0.5% BSA and 0.02% Sodium Azide.
<b>Isotype</b>	IgG
<b>Storage Instruction</b>	Store at -20°C for up to 1 year from the date of receipt, and avoid repeat freeze-thaw cycles.

### TARGET INFORMATION

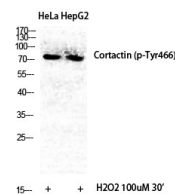
<b>Gene ID</b>	2017
<b>Gene Symbol</b>	CTTN
<b>Uniprot ID</b>	SRC8_HUMAN
<b>Immunogen</b>	The antiserum was produced against synthesized peptide derived from mouse Cortactin around the phosphorylation site of Tyr466 at amino acid range 441-490
<b>Immunogen Region</b>	410-490
<b>Specificity</b>	Phospho-CTTN-Tyr466 polyclonal antibody (Src Substrate Cortactin) binds to endogenous Src Substrate Cortactin at the amino acid region 410-490 only when phosphorylated at Tyr466.
<b>Immunogen Sequence</b>	



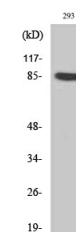
Western blot analysis of lysates from 293 cells, using Cortactin (Phospho-Tyr466) Antibody. The lane on the right is blocked with the phospho peptide.



Immunohistochemistry analysis of paraffin-embedded human breast carcinoma, using Cortactin (Phospho-Tyr466) Antibody. The picture on the right is blocked with the phospho peptide.



Western blot analysis of various cells using Phospho-Cortactin (Y466) Polyclonal Antibody diluted at 1: 500



Western blot analysis of 293 cells using Phospho-Cortactin (Y466) Polyclonal Antibody diluted at 1: 500