

Anti-Phospho-PPP1R2-Ser44 antibody (20-100) (STJ90990)

STJ90990

GENERAL INFORMATION

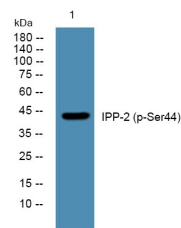
Product Type	Primary antibodies
Short Description	Rabbit polyclonal antibody anti-Phospho-Protein Phosphatase Inhibitor 2-Ser44 (20-100) is suitable for use in Western Blot, Immunohistochemistry, Immunofluorescence and ELISA research applications.
Applications	WB, IHC-P, IF-P, ELISA
Host/Source	Rabbit
Reactivity	Human, Mouse, Rat

PRODUCT PROPERTIES

Clonality	Polyclonal
Clone ID	
Concentration	1 mg/mL
Conjugation	Unconjugated
Purification	The antibody was affinity-purified from rabbit anti-serum by affinity-chromatography.
Dilution Range	WB 1:500-1:2000 IHC 1:100-1:300 ELISA 1:40000
Formulation	PBS, 50% Glycerol, 0.5% BSA and 0.02% Sodium Azide.
Isotype	IgG
Storage Instruction	Store at 20°C for up to 1 year from the date of receipt, and avoid repeat freeze-thaw cycles.

TARGET INFORMATION

Gene ID	5504
Gene Symbol	PPP1R2
Uniprot ID	IPP2_HUMAN
Immunogen	Synthesized phospho-peptide around the phosphorylation site of human IPP-2 (phospho Ser44)
Immunogen Region	20-100
Specificity	Phospho-PPP1R2-Ser44 polyclonal antibody (Protein Phosphatase Inhibitor 2) binds to endogenous Protein Phosphatase Inhibitor 2 at the amino acid region 20-100 only when phosphorylated at Ser44.
Immunogen Sequence	



Western blot analysis of lysates from K562 cells, primary antibody was diluted at 1:1000, 4°C over night

This product is suitable for in-vitro studies under the RESEARCH USE ONLY [RUO] licence. This product must not be used as for diagnostic or other medical purposes.
St John's Laboratory Ltd, Knowledge Dock Business Centre, University Way, London, E16 2RD | Tel: 0208 223 3081