

Anti-Phospho-NCF1-Ser345 antibody (280-360) (STJ90988)

STJ90988

GENERAL INFORMATION

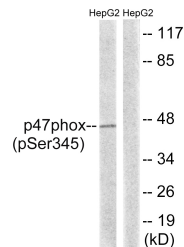
Product Type	Primary antibodies
Short Description	Rabbit polyclonal antibody anti-Phospho-Neutrophil Cytosol Factor 1-Ser345 (280-360) is suitable for use in Western Blot, Immunohistochemistry, Immunofluorescence and ELISA research applications.
Applications	WB, IHC-P, IF-P, ELISA
Host/Source	Rabbit
Reactivity	Human, Rat, Mouse

PRODUCT PROPERTIES

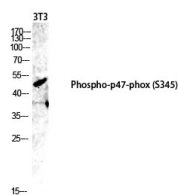
Clonality	Polyclonal
Clone ID	
Concentration	1 mg/mL
Conjugation	Unconjugated
Purification	The antibody was affinity-purified from rabbit anti-serum by affinity-chromatography.
Dilution Range	WB 1:500-1:2000 IHC 1:100-1:300 ELISA 1:5000
Formulation	PBS, 50% Glycerol, 0.5% BSA and 0.02% Sodium Azide.
Isotype	IgG
Storage Instruction	Store at -20°C for up to 1 year from the date of receipt, and avoid repeat freeze-thaw cycles.

TARGET INFORMATION

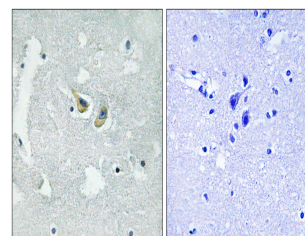
Gene ID	653361
Gene Symbol	NCF1
Uniprot ID	NCF1_HUMAN
Immunogen	The antiserum was produced against synthesized peptide derived from human p47 phox around the phosphorylation site of Ser345 at amino acid range 311-360
Immunogen Region	280-360
Specificity	Phospho-NCF1-Ser345 polyclonal antibody (Neutrophil Cytosol Factor 1) binds to endogenous Neutrophil Cytosol Factor 1 at the amino acid region 280-360 only when phosphorylated at Ser345.
Immunogen Sequence	



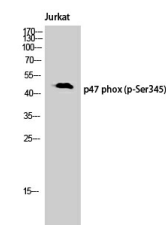
Western blot analysis of lysates from HepG2 cells treated with TNF 20ng/ml 5', using p47 phox (Phospho-Ser345) Antibody. The lane on the right is blocked with the phospho peptide.



Western blot analysis of 3T3 lysis using Phospho-p47-phox (S345) antibody. Antibody was diluted at 1:1000



Immunohistochemistry analysis of paraffin-embedded human brain, using p47 phox (Phospho-Ser345) Antibody. The picture on the right is blocked with the phospho peptide.



Western blot analysis of Jurkat cells using Phospho-p47-phox (S345) Polyclonal Antibody diluted at 1:1000

This product is suitable for in-vitro studies under the RESEARCH USE ONLY [RUO] licence. This product must not be used as for diagnostic or other medical purposes.
St John's Laboratory Ltd, Knowledge Dock Business Centre, University Way, London, E16 2RD | Tel: 0208 223 3081