

Anti-Phospho-CDKN2A-Ser326 antibody (90-170) (STJ90987)

STJ90987

GENERAL INFORMATION

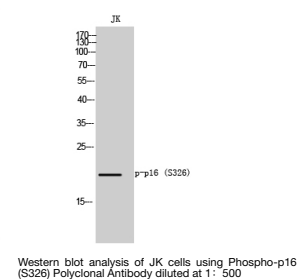
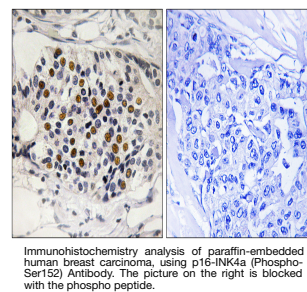
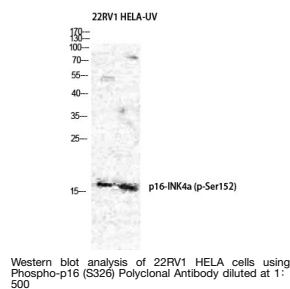
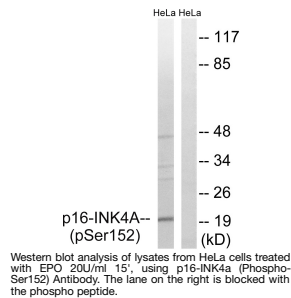
Product Type	Primary antibodies
Short Description	Rabbit polyclonal antibody anti-Phospho-Cyclin-Dependent Kinase Inhibitor 2a-Ser326 (90-170) is suitable for use in Western Blot, Immunohistochemistry, Immunofluorescence and ELISA research applications.
Applications	WB, IHC-P, IF-P, ELISA
Host/Source	Rabbit
Reactivity	Human, Rat, Mouse

PRODUCT PROPERTIES

Clonality	Polyclonal
Clone ID	
Concentration	1 mg/mL
Conjugation	Unconjugated
Purification	The antibody was affinity-purified from rabbit anti-serum by affinity-chromatography.
Dilution	WB 1:500-1:2000
Range	IHC 1:100-1:300 ELISA 1:5000
Formulation	PBS, 50% Glycerol, 0.5% BSA and 0.02% Sodium Azide.
Isotype	IgG
Storage Instruction	Store at -20°C for up to 1 year from the date of receipt, and avoid repeat freeze-thaw cycles.

TARGET INFORMATION

Gene ID	1029
Gene Symbol	CDKN2A
Uniprot ID	CDN2A_HUMAN
Immunogen	The antiserum was produced against synthesized peptide derived from human p16-INK4a around the phosphorylation site of Ser152 at amino acid range 107-156
Immunogen Region	90-170
Specificity	Phospho-CDKN2A-Ser326 polyclonal antibody (Cyclin-Dependent Kinase Inhibitor 2a) binds to endogenous Cyclin-Dependent Kinase Inhibitor 2a at the amino acid region 90-170 only when phosphorylated at Ser326.
Immunogen Sequence	



This product is suitable for in-vitro studies under the RESEARCH USE ONLY [RUO] licence. This product must not be used as for diagnostic or other medical purposes.
St John's Laboratory Ltd, Knowledge Dock Business Centre, University Way, London, E16 2RD | Tel: 0208 223 3081