

Anti-Phospho-NCOA2-Ser736 antibody (680-760) (STJ90985)

STJ90985

GENERAL INFORMATION

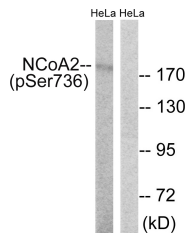
Product Type	Primary antibodies
Short Description	Rabbit polyclonal antibody anti-Phospho-Nuclear Receptor Coactivator 2-Ser736 (680-760) is suitable for use in Western Blot, Immunohistochemistry, Immunofluorescence and ELISA research applications.
Applications	WB, IHC-P, IF-P, ELISA
Host/Source	Rabbit
Reactivity	Human, Rat, Mouse

PRODUCT PROPERTIES

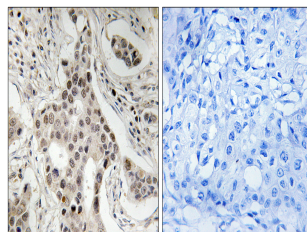
Clonality	Polyclonal
Clone ID	
Concentration	1 mg/mL
Conjugation	Unconjugated
Purification	The antibody was affinity-purified from rabbit anti-serum by affinity-chromatography.
Dilution Range	WB 1:500-1:2000 IHC 1:100-1:300 ELISA 1:5000
Formulation	PBS, 50% Glycerol, 0.5% BSA and 0.02% Sodium Azide.
Isotype	IgG
Storage Instruction	Store at -20°C for up to 1 year from the date of receipt, and avoid repeat freeze-thaw cycles.

TARGET INFORMATION

Gene ID	10499
Gene Symbol	NCOA2
Uniprot ID	NCOA2_HUMAN
Immunogen	The antiserum was produced against synthesized peptide derived from human NCoA2 around the phosphorylation site of Ser736 at amino acid range 702-751
Immunogen Region	680-760
Specificity	Phospho-NCOA2-Ser736 polyclonal antibody (Nuclear Receptor Coactivator 2) binds to endogenous Nuclear Receptor Coactivator 2 at the amino acid region 680-760 only when phosphorylated at Ser736.
Immunogen Sequence	



Western blot analysis of lysates from HeLa cells treated with TSA 400nM 24h, using NCoA2 (Phospho-Ser736) Antibody. The lane on the right is blocked with the phospho peptide.



Immunohistochemistry analysis of paraffin-embedded human breast carcinoma, using NCoA2 (Phospho-Ser736) Antibody. The picture on the right is blocked with the phospho peptide.

This product is suitable for in-vitro studies under the RESEARCH USE ONLY [RUO] licence. This product must not be used as for diagnostic or other medical purposes.
St John's Laboratory Ltd, Knowledge Dock Business Centre, University Way, London, E16 2RD | Tel: 0208 223 3081