

Anti-Phospho-MKNK1-Thr385 antibody (320-400) (STJ90984)

STJ90984

GENERAL INFORMATION

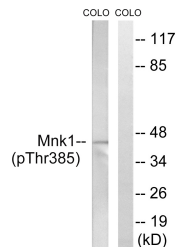
Product Type	Primary antibodies
Short Description	Rabbit polyclonal antibody anti-Phospho-Map Kinase-Interacting Serine/Threonine-Protein Kinase 1-Thr385 (320-400) is suitable for use in Western Blot, Immunohistochemistry, Immunofluorescence and ELISA research applications.
Applications	WB, IHC-P, IF-P, ELISA
Host/Source	Rabbit
Reactivity	Human, Mouse, Rat

PRODUCT PROPERTIES

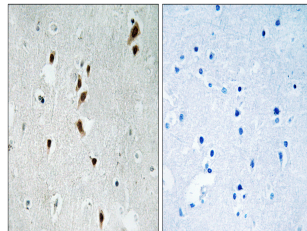
Clonality	Polyclonal
Clone ID	
Concentration	1 mg/mL
Conjugation	Unconjugated
Purification	The antibody was affinity-purified from rabbit anti-serum by affinity-chromatography.
Dilution Range	WB 1:500-1:2000 IHC 1:100-1:300 ELISA 1:20000
Formulation	PBS, 50% Glycerol, 0.5% BSA and 0.02% Sodium Azide.
Isotype	IgG
Storage Instruction	Store at -20°C for up to 1 year from the date of receipt, and avoid repeat freeze-thaw cycles.

TARGET INFORMATION

Gene ID	8569
Gene Symbol	MKNK1
Uniprot ID	MKNK1_HUMAN
Immunogen	The antiserum was produced against synthesized peptide derived from human Mnk1 around the phosphorylation site of Thr385 at amino acid range 351-400
Immunogen Region	320-400
Specificity	Phospho-MKNK1-Thr385 polyclonal antibody (Map Kinase-Interacting Serine/Threonine-Protein Kinase 1) binds to endogenous Map Kinase-Interacting Serine/Threonine-Protein Kinase 1 at the amino acid region 320-400 only when phosphorylated at Thr385.
Immunogen Sequence	



Western blot analysis of lysates from COLO205 cells treated with PMA 125ng/ml 30', using Mnk1 (Phospho-Thr385) Antibody. The lane on the right is blocked with the phospho peptide.



Immunohistochemistry analysis of paraffin-embedded human brain, using Mnk1 (Phospho-Thr385) Antibody. The picture on the right is blocked with the phospho peptide.

This product is suitable for in-vitro studies under the RESEARCH USE ONLY [RUO] licence. This product must not be used as for diagnostic or other medical purposes.
St John's Laboratory Ltd, Knowledge Dock Business Centre, University Way, London, E16 2RD | Tel: 0208 223 3081