

Anti-Phospho-MKP-1/2-Ser296/318 antibody (230-310) (STJ90983)

STJ90983

GENERAL INFORMATION

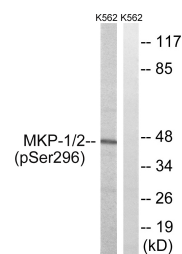
Product Type	Primary antibodies
Short Description	Rabbit polyclonal antibody anti-Phospho-Dual specificity protein phosphatase 1 and Dual specificity protein phosphatase 4-Ser296/318 (230-310) is suitable for use in Western Blot, Immunohistochemistry, Immunofluorescence and ELISA research application
Applications	WB, IHC-P, IF-P, ELISA
Host/Source	Rabbit
Reactivity	Human, Mouse, Rat

PRODUCT PROPERTIES

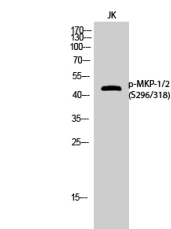
Clonality	Polyclonal
Clone ID	
Concentration	1 mg/mL
Conjugation	Unconjugated
Purification	The antibody was affinity-purified from rabbit anti-serum by affinity-chromatography.
Dilution	WB 1:500-1:2000
Range	IHC 1:100-1:300 ELISA 1:5000
Formulation	PBS, 50% Glycerol, 0.5% BSA and 0.02% Sodium Azide.
Isotype	IgG
Storage Instruction	Store at -20°C for up to 1 year from the date of receipt, and avoid repeat freeze-thaw cycles.

TARGET INFORMATION

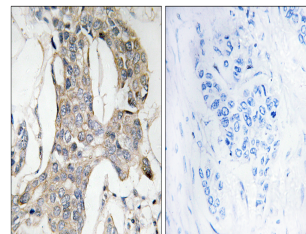
Gene ID	1843 1846
Gene Symbol	DUSP1 DUSP4
Uniprot ID	DUS1_HUMAN DUS4_HUMAN
Immunogen	The antiserum was produced against synthesized peptide derived from human MKP-1/2 around the phosphorylation site of Ser296/318 at amino acid range 261-310
Immunogen Region	230-310
Specificity	Phospho-MKP-1/2-Ser296/318 polyclonal antibody (Dual specificity protein phosphatase 1 and Dual specificity protein phosphatase 4) binds to endogenous Dual specificity protein phosphatase 1 and Dual specificity protein phosphatase 4 at the amino acid
Immunogen Sequence	



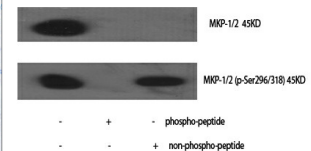
Western blot analysis of lysates from K562 cells treated with heat shock, using MKP-1/2 (Phospho-Ser296/318) Antibody. The lane on the right is blocked with the phospho peptide.



Western blot analysis of JK cells using Phospho-MKP-1/2 (Ser296/318) Polyclonal Antibody cells nucleus extracted by Minute TM Cytoplasmic and Nuclear Fractionation kit (SC-003, Inventibiotech, MN, USA).



Immunohistochemistry analysis of paraffin-embedded human breast carcinoma, using MKP-1/2 (Phospho-Ser296/318) Antibody. The picture on the right is blocked with the phospho peptide.



Western blot analysis of various cells using Phospho-MKP-1/2 (Ser296/318) Polyclonal Antibody cells nucleus extracted by Minute TM Cytoplasmic and Nuclear Fractionation kit (SC-003, Inventibiotech, MN, USA).

This product is suitable for in-vitro studies under the RESEARCH USE ONLY [RUO] licence. This product must not be used as for diagnostic or other medical purposes.
St John's Laboratory Ltd, Knowledge Dock Business Centre, University Way, London, E16 2RD | Tel: 0208 223 3081