

## Anti-Phospho-MEF2C-Ser396 antibody (340-420) (STJ90982)

STJ90982

### GENERAL INFORMATION

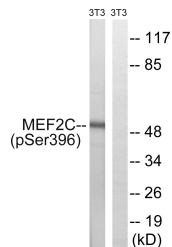
<b>Product Type</b>	Primary antibodies
<b>Short Description</b>	Rabbit polyclonal antibody anti-Phospho-Myocyte-Specific Enhancer Factor 2c-Ser396 (340-420) is suitable for use in Western Blot, Immunohistochemistry, Immunofluorescence and ELISA research applications.
<b>Applications</b>	WB, IHC-P, IF-P, ELISA
<b>Host/Source</b>	Rabbit
<b>Reactivity</b>	Human, Mouse

### PRODUCT PROPERTIES

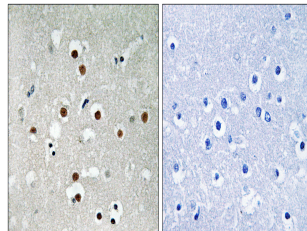
<b>Clonality</b>	Polyclonal
<b>Clone ID</b>	
<b>Concentration</b>	1 mg/mL
<b>Conjugation</b>	Unconjugated
<b>Purification</b>	The antibody was affinity-purified from rabbit anti-serum by affinity-chromatography.
<b>Dilution Range</b>	WB 1:500-1:2000 IHC 1:100-1:300 ELISA 1:10000
<b>Formulation</b>	PBS, 50% Glycerol, 0.5% BSA and 0.02% Sodium Azide.
<b>Isotype</b>	IgG
<b>Storage Instruction</b>	Store at 20°C for up to 1 year from the date of receipt, and avoid repeat freeze-thaw cycles.

### TARGET INFORMATION

<b>Gene ID</b>	4208
<b>Gene Symbol</b>	MEF2C
<b>Uniprot ID</b>	MEF2C_HUMAN
<b>Immunogen</b>	The antiserum was produced against synthesized peptide derived from human MEF2C around the phosphorylation site of Ser396 at amino acid range 362-411
<b>Immunogen Region</b>	340-420
<b>Specificity</b>	Phospho-MEF2C-Ser396 polyclonal antibody (Myocyte-Specific Enhancer Factor 2c) binds to endogenous Myocyte-Specific Enhancer Factor 2c at the amino acid region 340-420 only when phosphorylated at Ser396.
<b>Immunogen Sequence</b>	



Western blot analysis of lysates from NIH/3T3 cells treated with starved 24h, using MEF2C (Phospho-Ser396) Antibody. The lane on the right is blocked with the phospho peptide.



Immunohistochemistry analysis of paraffin-embedded human brain, using MEF2C (Phospho-Ser396) Antibody. The picture on the right is blocked with the phospho peptide.

This product is suitable for in-vitro studies under the RESEARCH USE ONLY [RUO] licence. This product must not be used as for diagnostic or other medical purposes.  
St John's Laboratory Ltd, Knowledge Dock Business Centre, University Way, London, E16 2RD | Tel: 0208 223 3081