

Anti-Phospho-GAB2-Tyr643 antibody (580-660) (STJ90977)

STJ90977

GENERAL INFORMATION

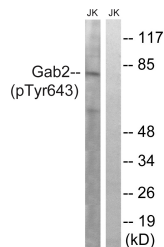
Product Type	Primary antibodies
Short Description	Rabbit polyclonal antibody anti-Phospho-Grb2-Associated-Binding Protein 2-Tyr643 (580-660) is suitable for use in Western Blot, Immunohistochemistry, Immunofluorescence and ELISA research applications.
Applications	WB, IHC-P, IF-P, ELISA
Host/Source	Rabbit
Reactivity	Human, Mouse, Rat

PRODUCT PROPERTIES

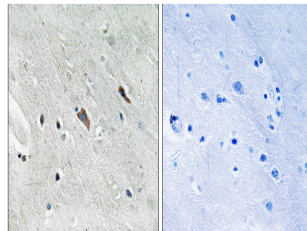
Clonality	Polyclonal
Clone ID	
Concentration	1 mg/mL
Conjugation	Unconjugated
Purification	The antibody was affinity-purified from rabbit anti-serum by affinity-chromatography.
Dilution Range	WB 1:500-1:2000 IHC 1:100-1:300 ELISA 1:40000
Formulation	PBS, 50% Glycerol, 0.5% BSA and 0.02% Sodium Azide.
Isotype	IgG
Storage Instruction	Store at -20°C for up to 1 year from the date of receipt, and avoid repeat freeze-thaw cycles.

TARGET INFORMATION

Gene ID	9846
Gene Symbol	GAB2
Uniprot ID	GAB2_HUMAN
Immunogen	The antiserum was produced against synthesized peptide derived from human Gab2 around the phosphorylation site of Tyr643 at amino acid range 609-658
Immunogen Region	580-660
Specificity	Phospho-GAB2-Tyr643 polyclonal antibody (Grb2-Associated-Binding Protein 2) binds to endogenous Grb2-Associated-Binding Protein 2 at the amino acid region 580-660 only when phosphorylated at Tyr643.
Immunogen Sequence	



Western blot analysis of lysates from Jurkat cells treated with IFN 2500U/ML 30', using Gab2 (Phospho-Tyr643) Antibody. The lane on the right is blocked with the phospho peptide.



Immunohistochemistry analysis of paraffin-embedded human brain, using Gab2 (Phospho-Tyr643) Antibody. The picture on the right is blocked with the phospho peptide.

This product is suitable for in-vitro studies under the RESEARCH USE ONLY [RUO] licence. This product must not be used as for diagnostic or other medical purposes.
St John's Laboratory Ltd, Knowledge Dock Business Centre, University Way, London, E16 2RD | Tel: 0208 223 3081