

Anti-Phospho-CTBP1-Ser422 antibody (360-440) (STJ90975)

STJ90975

GENERAL INFORMATION

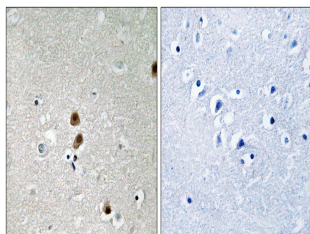
Product Type	Primary antibodies
Short Description	Rabbit polyclonal antibody anti-Phospho-C-Terminal-Binding Protein 1-Ser422 (360-440) is suitable for use in Western Blot, Immunohistochemistry, Immunofluorescence and ELISA research applications.
Applications	WB, IHC-P, IF-P, ELISA
Host/Source	Rabbit
Reactivity	Human, Mouse, Rat

PRODUCT PROPERTIES

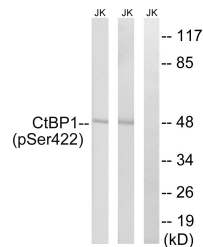
Clonality	Polyclonal
Clone ID	
Concentration	1 mg/mL
Conjugation	Unconjugated
Purification	The antibody was affinity-purified from rabbit anti-serum by affinity-chromatography.
Dilution Range	WB 1:500-1:2000 IHC 1:100-1:300 ELISA 1:10000
Formulation	PBS, 50% Glycerol, 0.5% BSA and 0.02% Sodium Azide.
Isotype	IgG
Storage Instruction	Store at -20°C for up to 1 year from the date of receipt, and avoid repeat freeze-thaw cycles.

TARGET INFORMATION

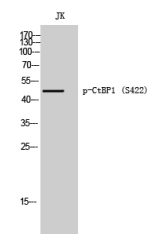
Gene ID	1487
Gene Symbol	CTBP1
Uniprot ID	CTBP1_HUMAN
Immunogen	The antiserum was produced against synthesized peptide derived from human CtBP1 around the phosphorylation site of Ser422 at amino acid range 388-437
Immunogen Region	360-440
Specificity	Phospho-CTBP1-Ser422 polyclonal antibody (C-Terminal-Binding Protein 1) binds to endogenous C-Terminal-Binding Protein 1 at the amino acid region 360-440 only when phosphorylated at Ser422.
Immunogen Sequence	



Immunohistochemistry analysis of paraffin-embedded human brain, using CtBP1 (Phospho-Ser422) Antibody. The picture on the right is blocked with the phospho peptide.



Western blot analysis of lysates from Jurkat cells treated with TNF 20ng/ml 30' and Jurkat cells treated with UV 15', using CtBP1 (Phospho-Ser422) Antibody. The lane on the right is blocked with the phospho peptide.



Western blot analysis of JK cells using Phospho-CTBP1 (S422) Polyclonal Antibody

This product is suitable for in-vitro studies under the RESEARCH USE ONLY [RUO] licence. This product must not be used as for diagnostic or other medical purposes.
St John's Laboratory Ltd, Knowledge Dock Business Centre, University Way, London, E16 2RD | Tel: 0208 223 3081