

Anti-Phospho-CDH5-Tyr731 antibody (670-750) (STJ90968)

STJ90968

GENERAL INFORMATION

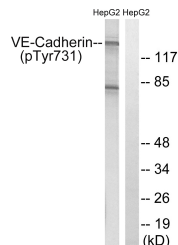
Product Type	Primary antibodies
Short Description	Rabbit polyclonal antibody anti-Phospho-Cadherin-5-Tyr731 (670-750) is suitable for use in Western Blot, Immunohistochemistry, Immunofluorescence and ELISA research applications.
Applications	WB, IHC-P, IF-P, ELISA
Host/Source	Rabbit
Reactivity	Human, Mouse

PRODUCT PROPERTIES

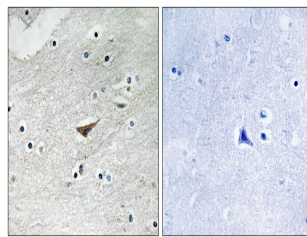
Clonality	Polyclonal
Clone ID	
Concentration	1 mg/mL
Conjugation	Unconjugated
Purification	The antibody was affinity-purified from rabbit anti-serum by affinity-chromatography.
Dilution Range	WB 1:500-1:2000 IHC 1:100-1:300 ELISA 1:20000
Formulation	PBS, 50% Glycerol, 0.5% BSA and 0.02% Sodium Azide.
Isotype	IgG
Storage Instruction	Store at -20°C for up to 1 year from the date of receipt, and avoid repeat freeze-thaw cycles.

TARGET INFORMATION

Gene ID	1003
Gene Symbol	CDH5
Uniprot ID	CADH5_HUMAN
Immunogen	The antiserum was produced against synthesized peptide derived from human VE-Cadherin around the phosphorylation site of Tyr731 at amino acid range 697-746
Immunogen Region	670-750
Specificity	Phospho-CDH5-Tyr731 polyclonal antibody (Cadherin-5) binds to endogenous Cadherin-5 at the amino acid region 670-750 only when phosphorylated at Tyr731.
Immunogen Sequence	



Western blot analysis of lysates from HepG2 cells treated with Na₃VO₄ 0.3mM 40', using VE-Cadherin (Phospho-Tyr731) Antibody. The lane on the right is blocked with the phospho peptide.



Immunohistochemistry analysis of paraffin-embedded human brain, using VE-Cadherin (Phospho-Tyr731) Antibody. The picture on the right is blocked with the phospho peptide.

This product is suitable for in-vitro studies under the RESEARCH USE ONLY [RUO] licence. This product must not be used as for diagnostic or other medical purposes.
St John's Laboratory Ltd, Knowledge Dock Business Centre, University Way, London, E16 2RD | Tel: 0208 223 3081