

Anti-Phospho-LCP2-Tyr128 antibody (70-150) (STJ90961)

STJ90961

GENERAL INFORMATION

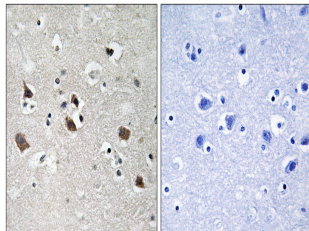
Product Type	Primary antibodies
Short Description	Rabbit polyclonal antibody anti-Phospho-Lymphocyte Cytosolic Protein 2-Tyr128 (70-150) is suitable for use in Western Blot, Immunohistochemistry, Immunofluorescence and ELISA research applications.
Applications	WB, IHC-P, IF-P, ELISA
Host/Source	Rabbit
Reactivity	Human, Mouse, Rat

PRODUCT PROPERTIES

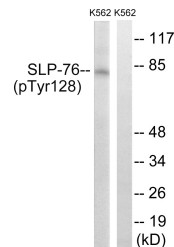
Clonality	Polyclonal
Clone ID	
Concentration	1 mg/mL
Conjugation	Unconjugated
Purification	The antibody was affinity-purified from rabbit anti-serum by affinity-chromatography.
Dilution	WB 1:500-1:2000
Range	IHC 1:100-1:300 ELISA 1:5000
Formulation	PBS, 50% Glycerol, 0.5% BSA and 0.02% Sodium Azide.
Isotype	IgG
Storage Instruction	Store at -20°C for up to 1 year from the date of receipt, and avoid repeat freeze-thaw cycles.

TARGET INFORMATION

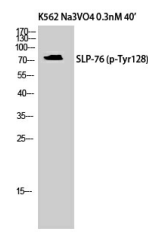
Gene ID	3937
Gene Symbol	LCP2
Uniprot ID	LCP2_HUMAN
Immunogen	The antiserum was produced against synthesized peptide derived from human SLP-76 around the phosphorylation site of Tyr128 at amino acid range 94-143
Immunogen Region	70-150
Specificity	Phospho-LCP2-Tyr128 polyclonal antibody (Lymphocyte Cytosolic Protein 2) binds to endogenous Lymphocyte Cytosolic Protein 2 at the amino acid region 70-150 only when phosphorylated at Tyr128.
Immunogen Sequence	



Immunohistochemistry analysis of paraffin-embedded human brain, using SLP-76 (Phospho-Tyr128) Antibody. The picture on the right is blocked with the phospho peptide.



Western blot analysis of lysates from K562 cells treated with Na₃VO₄ 0.3nM 40', using SLP-76 (Phospho-Tyr128) Antibody. The lane on the right is blocked with the phospho peptide.



Western blot analysis of K562 cells using Phospho-SLP-76 (Y128) Polyclonal Antibody

This product is suitable for in-vitro studies under the RESEARCH USE ONLY [RUO] licence. This product must not be used as for diagnostic or other medical purposes.
St John's Laboratory Ltd, Knowledge Dock Business Centre, University Way, London, E16 2RD | Tel: 0208 223 3081