

Anti-Phospho-SRC-Ser75 antibody (10-90) (STJ90958)

STJ90958

GENERAL INFORMATION

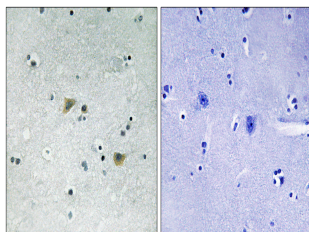
Product Type	Primary antibodies
Short Description	Rabbit polyclonal antibody anti-Phospho-Proto-Oncogene Tyrosine-Protein Kinase Src-Ser75 (10-90) is suitable for use in Western Blot, Immunohistochemistry, Immunofluorescence and ELISA research applications.
Applications	WB, IHC-P, IF-P, ELISA
Host/Source	Rabbit
Reactivity	Human, Mouse, Rat

PRODUCT PROPERTIES

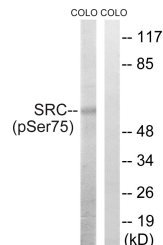
Clonality	Polyclonal
Clone ID	
Concentration	1 mg/mL
Conjugation	Unconjugated
Purification	The antibody was affinity-purified from rabbit anti-serum by affinity-chromatography.
Dilution Range	WB 1:500-1:2000 IHC 1:100-1:300 ELISA 1:5000
Formulation	PBS, 50% Glycerol, 0.5% BSA and 0.02% Sodium Azide.
Isotype	IgG
Storage Instruction	Store at -20°C for up to 1 year from the date of receipt, and avoid repeat freeze-thaw cycles.

TARGET INFORMATION

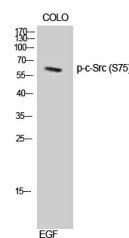
Gene ID	6714
Gene Symbol	SRC
Uniprot ID	SRC_HUMAN
Immunogen	The antiserum was produced against synthesized peptide derived from human Src around the phosphorylation site of Ser75 at amino acid range 41-90
Immunogen Region	10-90
Specificity	Phospho-SRC-Ser75 polyclonal antibody (Proto-Oncogene Tyrosine-Protein Kinase Src) binds to endogenous Proto-Oncogene Tyrosine-Protein Kinase Src at the amino acid region 10-90 only when phosphorylated at Ser75.
Immunogen Sequence	



Immunohistochemistry analysis of paraffin-embedded human brain, using Src (Phospho-Ser75) Antibody. The picture on the right is blocked with the phospho peptide.



Western blot analysis of lysates from COLO205 cells treated with EGF 200ng/ml 30', using Src (Phospho-Ser75) Antibody. The lane on the right is blocked with the phospho peptide.



Western blot analysis of COLO cells using Phospho-c-Src (S75) Polyclonal Antibody diluted at 1: 1000

This product is suitable for in-vitro studies under the RESEARCH USE ONLY [RUO] licence. This product must not be used as for diagnostic or other medical purposes.
St John's Laboratory Ltd, Knowledge Dock Business Centre, University Way, London, E16 2RD | Tel: 0208 223 3081