

## Anti-Phospho-RIPK2-Ser176 antibody (120-200) (STJ90957)

STJ90957

### GENERAL INFORMATION

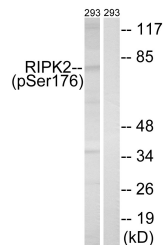
<b>Product Type</b>	Primary antibodies
<b>Short Description</b>	Rabbit polyclonal antibody anti-Phospho-Receptor-Interacting Serine/Threonine-Protein Kinase 2-Ser176 (120-200) is suitable for use in Western Blot, Immunohistochemistry, Immunofluorescence and ELISA research applications.
<b>Applications</b>	WB, IHC-P, IF-P, ELISA
<b>Host/Source</b>	Rabbit
<b>Reactivity</b>	Human, Mouse

### PRODUCT PROPERTIES

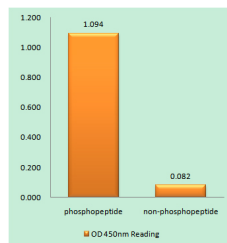
<b>Clonality</b>	Polyclonal
<b>Clone ID</b>	
<b>Concentration</b>	1 mg/mL
<b>Conjugation</b>	Unconjugated
<b>Purification</b>	The antibody was affinity-purified from rabbit anti-serum by affinity-chromatography.
<b>Dilution Range</b>	WB 1:500-1:2000 IHC 1:100-1:300 ELISA 1:40000
<b>Formulation</b>	PBS, 50% Glycerol, 0.5% BSA and 0.02% Sodium Azide.
<b>Isotype</b>	IgG
<b>Storage Instruction</b>	Store at -20°C for up to 1 year from the date of receipt, and avoid repeat freeze-thaw cycles.

### TARGET INFORMATION

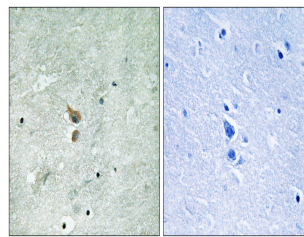
<b>Gene ID</b>	8767
<b>Gene Symbol</b>	RIPK2
<b>Uniprot ID</b>	RIPK2_HUMAN
<b>Immunogen</b>	The antiserum was produced against synthesized peptide derived from human RIPK2 around the phosphorylation site of Ser176 at amino acid range 146-195
<b>Immunogen Region</b>	120-200
<b>Specificity</b>	Phospho-RIPK2-Ser176 polyclonal antibody (Receptor-Interacting Serine/Threonine-Protein Kinase 2) binds to endogenous Receptor-Interacting Serine/Threonine-Protein Kinase 2 at the amino acid region 120-200 only when phosphorylated at Ser176.
<b>Immunogen Sequence</b>	



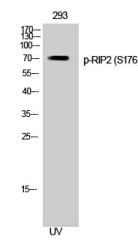
Western blot analysis of lysates from 293 cells treated with UV 15', using RIPK2 (Phospho-Ser176) Antibody. The lane on the right is blocked with the phospho peptide.



Enzyme-Linked Immunosorbent Assay (Phospho-ELISA) for Immunogen Phosphopeptide (Phospho-left) and Non-Phosphopeptide (Phospho-right), using RIPK2 (Phospho-Ser176) Antibody



Immunohistochemistry analysis of paraffin-embedded human brain, using RIPK2 (Phospho-Ser176) Antibody. The picture on the right is blocked with the phospho peptide.



Western blot analysis of 293 cells using Phospho-RIPK2 (S176) Polyclonal Antibody

This product is suitable for in-vitro studies under the RESEARCH USE ONLY [RUO] licence. This product must not be used as for diagnostic or other medical purposes.  
St John's Laboratory Ltd, Knowledge Dock Business Centre, University Way, London, E16 2RD | Tel: 0208 223 3081