

Anti-Phospho-EIF2AK2-Thr258 antibody (200-280) (STJ90956)

STJ90956

GENERAL INFORMATION

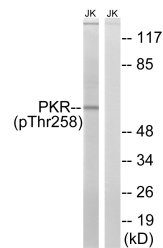
Product Type	Primary antibodies
Short Description	Rabbit polyclonal antibody anti-Phospho-Interferon-Induced-Double-Stranded Rna-Activated Protein Kinase-Thr258 (200-280) is suitable for use in Western Blot, Immunohistochemistry, Immunofluorescence and ELISA research applications.
Applications	WB, IHC-P, IF-P, ELISA
Host/Source	Rabbit
Reactivity	Human, Rat, Mouse

PRODUCT PROPERTIES

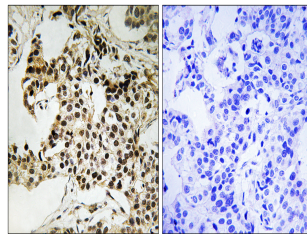
Clonality	Polyclonal
Clone ID	
Concentration	1 mg/mL
Conjugation	Unconjugated
Purification	The antibody was affinity-purified from rabbit anti-serum by affinity-chromatography.
Dilution Range	WB 1:500-1:2000 IHC 1:100-1:300 ELISA 1:20000
Formulation	PBS, 50% Glycerol, 0.5% BSA and 0.02% Sodium Azide.
Isotype	IgG
Storage Instruction	Store at -20°C for up to 1 year from the date of receipt, and avoid repeat freeze-thaw cycles.

TARGET INFORMATION

Gene ID	5610
Gene Symbol	EIF2AK2
Uniprot ID	E2AK2_HUMAN
Immunogen	The antiserum was produced against synthesized peptide derived from human PKR around the phosphorylation site of Thr258 at amino acid range 226-275
Immunogen Region	200-280
Specificity	Phospho-EIF2AK2-Thr258 polyclonal antibody (Interferon-Induced-Double-Stranded Rna-Activated Protein Kinase) binds to endogenous Interferon-Induced-Double-Stranded Rna-Activated Protein Kinase at the amino acid region 200-280 only when phosphorylated
Immunogen Sequence	



Western blot analysis of lysates from Jurkat cells treated with starved 24h, using PKR (Phospho-Thr258) Antibody. The lane on the right is blocked with the phospho peptide.



Immunohistochemistry analysis of paraffin-embedded human breast carcinoma, using PKR (Phospho-Thr258) Antibody. The picture on the right is blocked with the phospho peptide.