

## Anti-Phospho-Casein Kinase I Alpha-Tyr294 antibody (230-310) (STJ90942)

STJ90942

### GENERAL INFORMATION

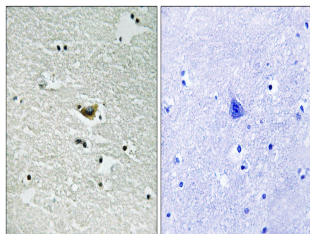
<b>Product Type</b>	Primary antibodies
<b>Short Description</b>	Rabbit polyclonal antibody anti-Phospho-Casein kinase I isoform alpha and Casein kinase I isoform alpha-like-Tyr294 (230-310) is suitable for use in Western Blot, Immunohistochemistry, Immunofluorescence and ELISA research applications.
<b>Applications</b>	WB, IHC-P, IF-P, ELISA
<b>Host/Source</b>	Rabbit
<b>Reactivity</b>	Human, Mouse, Rat

### PRODUCT PROPERTIES

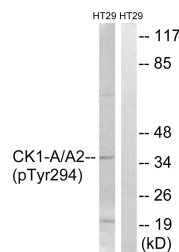
<b>Clonality</b>	Polyclonal
<b>Clone ID</b>	
<b>Concentration</b>	1 mg/mL
<b>Conjugation</b>	Unconjugated
<b>Purification</b>	The antibody was affinity-purified from rabbit anti-serum by affinity-chromatography.
<b>Dilution Range</b>	WB 1:500-1:2000 IHC 1:100-1:300 ELISA 1:10000
<b>Formulation</b>	PBS, 50% Glycerol, 0.5% BSA and 0.02% Sodium Azide.
<b>Isotype</b>	IgG
<b>Storage Instruction</b>	Store at -20°C for up to 1 year from the date of receipt, and avoid repeat freeze-thaw cycles.

### TARGET INFORMATION

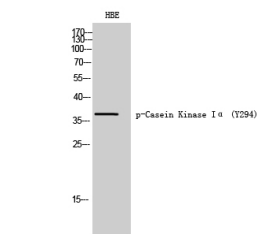
<b>Gene ID</b>	<a href="#">1452</a> <a href="#">122011</a>
<b>Gene Symbol</b>	<a href="#">CSNK1A1</a> <a href="#">CSNK1A1L</a>
<b>Uniprot ID</b>	<a href="#">KC1A_HUMAN</a> <a href="#">KC1AL_HUMAN</a>
<b>Immunogen</b>	The antiserum was produced against synthesized peptide derived from human CK-1 alpha around the phosphorylation site of Tyr294 at amino acid range 260-309
<b>Immunogen Region</b>	230-310
<b>Specificity</b>	Phospho-Casein Kinase I Alpha-Tyr294 polyclonal antibody (Casein kinase I isoform alpha and Casein kinase I isoform alpha-like) binds to endogenous Casein kinase I isoform alpha and Casein kinase I isoform alpha-like at the amino acid region 230-310
<b>Immunogen Sequence</b>	



Immunohistochemistry analysis of paraffin-embedded human brain, using CK-1 alpha (Phospho-Tyr294) Antibody. The picture on the right is blocked with the phospho peptide.



Western blot analysis of lysates from HT29 cells treated with heat shock, using CK-1 alpha (Phospho-Tyr294) Antibody. The lane on the right is blocked with the phospho peptide.



Western blot analysis of HBE cells using Phospho-Casein Kinase I Alpha (Y294) Polyclonal Antibody diluted at 1: 1000

This product is suitable for in-vitro studies under the RESEARCH USE ONLY [RUO] licence. This product must not be used as for diagnostic or other medical purposes.  
St John's Laboratory Ltd, Knowledge Dock Business Centre, University Way, London, E16 2RD | Tel: 0208 223 3081