

Anti-Phospho-Akt1/3-Tyr437/434 antibody (380-460) (STJ90938)

STJ90938

GENERAL INFORMATION

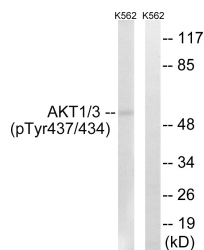
Product Type	Primary antibodies
Short Description	Rabbit polyclonal antibody anti-Phospho-RAC-alpha serine/threonine-protein kinase and RAC-gamma serine/threonine-protein kinase-Tyr437/434 (380-460) is suitable for use in Western Blot, Immunohistochemistry, Immunofluorescence and ELISA research appl
Applications	WB, IHC-P, IF-P, ELISA
Host/Source	Rabbit
Reactivity	Human, Mouse, Rat

PRODUCT PROPERTIES

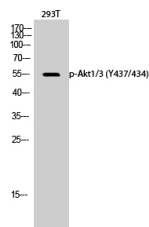
Clonality	Polyclonal
Clone ID	
Concentration	1 mg/mL
Conjugation	Unconjugated
Purification	The antibody was affinity-purified from rabbit anti-serum by affinity-chromatography.
Dilution Range	WB 1:500-1:2000 IHC 1:100-1:300 ELISA 1:20000
Formulation	PBS, 50% Glycerol, 0.5% BSA and 0.02% Sodium Azide.
Isotype	IgG
Storage Instruction	Store at -20°C for up to 1 year from the date of receipt, and avoid repeat freeze-thaw cycles.

TARGET INFORMATION

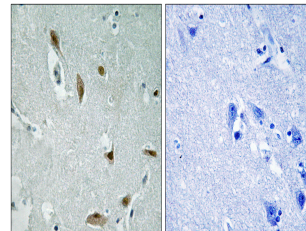
Gene ID	10000 207
Gene Symbol	AKT3 AKT1
Uniprot ID	AKT3_HUMAN AKT1_HUMAN
Immunogen	The antiserum was produced against synthesized peptide derived from human AKT1/3 around the phosphorylation site of Tyr437/434 at amino acid range 406-455 380-460
Immunogen Region Specificity	Phospho-Akt1/3-Tyr437/434 polyclonal antibody (RAC-alpha serine/threonine-protein kinase and RAC-gamma serine/threonine-protein kinase) binds to endogenous RAC-alpha serine/threonine-protein kinase and RAC-gamma serine/threonine-protein kinase at the
Immunogen Sequence	



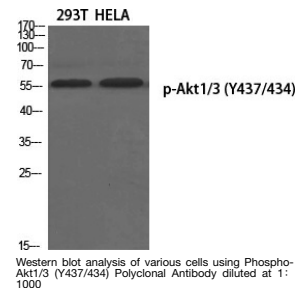
Western blot analysis of lysates from K562 cells treated with insulin 0.01U/ml 15', using AKT1/3 (Phospho-Tyr437/434) Antibody. The lane on the right is blocked with the phospho peptide.



Western blot analysis of 293T cells using Phospho-Akt1/3 (Y437/434) Polyclonal Antibody diluted at 1:1000



Immunohistochemistry analysis of paraffin-embedded human brain, using AKT1/3 (Phospho-Tyr437/434) Antibody. The picture on the right is blocked with the phospho peptide.



Western blot analysis of various cells using Phospho-Akt1/3 (Y437/434) Polyclonal Antibody diluted at 1:1000

This product is suitable for in-vitro studies under the RESEARCH USE ONLY [RUO] licence. This product must not be used as for diagnostic or other medical purposes.
St John's Laboratory Ltd, Knowledge Dock Business Centre, University Way, London, E16 2RD | Tel: 0208 223 3081