

Anti-Phospho-IGF2R-Ser2409 antibody (2350-2430) (STJ90923)

STJ90923

GENERAL INFORMATION

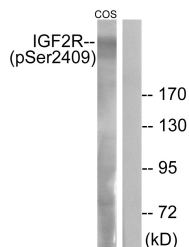
Product Type	Primary antibodies
Short Description	Rabbit polyclonal antibody anti-Phospho-Cation-Independent Mannose-6-Phosphate Receptor-Ser2409 (2350-2430) is suitable for use in Western Blot, Immunohistochemistry, Immunofluorescence and ELISA research applications.
Applications	WB, IHC-P, IF-P, ELISA
Host/Source	Rabbit
Reactivity	Human, Mouse, Monkey

PRODUCT PROPERTIES

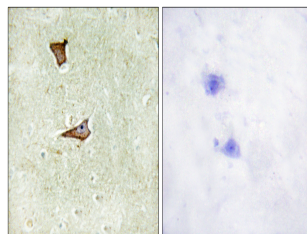
Clonality	Polyclonal
Clone ID	
Concentration	1 mg/mL
Conjugation	Unconjugated
Purification	The antibody was affinity-purified from rabbit anti-serum by affinity-chromatography.
Dilution Range	WB 1:500-1:2000 IHC 1:100-1:300 ELISA 1:10000
Formulation	PBS, 50% Glycerol, 0.5% BSA and 0.02% Sodium Azide.
Isotype	IgG
Storage Instruction	Store at 20°C for up to 1 year from the date of receipt, and avoid repeat freeze-thaw cycles.

TARGET INFORMATION

Gene ID	3482
Gene Symbol	IGF2R
Uniprot ID	MPRI_HUMAN
Immunogen	The antiserum was produced against synthesized peptide derived from human IGF2R around the phosphorylation site of Ser2409 at amino acid range 2381-2430
Immunogen Region	2350-2430
Specificity	Phospho-IGF2R-Ser2409 polyclonal antibody (Cation-Independent Mannose-6-Phosphate Receptor) binds to endogenous Cation-Independent Mannose-6-Phosphate Receptor at the amino acid region 2350-2430 only when phosphorylated at Ser2409.
Immunogen Sequence	



Western blot analysis of lysates from COS7 cells treated with UV 15', using IGF2R (Phospho-Ser2409) Antibody. The lane on the right is blocked with the phospho peptide.



Immunohistochemistry analysis of paraffin-embedded human brain, using IGF2R (Phospho-Ser2409) Antibody. The picture on the right is blocked with the phospho peptide.

This product is suitable for in-vitro studies under the RESEARCH USE ONLY [RUO] licence. This product must not be used as for diagnostic or other medical purposes.
St John's Laboratory Ltd, Knowledge Dock Business Centre, University Way, London, E16 2RD | Tel: 0208 223 3081