

Anti-Phospho-AURKB-Tyr12 antibody (1-80) (STJ90920)

STJ90920

GENERAL INFORMATION

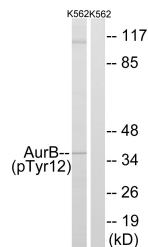
Product Type	Primary antibodies
Short Description	Rabbit polyclonal antibody anti-Phospho-Aurora Kinase B-Tyr12 (1-80) is suitable for use in Western Blot, Immunohistochemistry, Immunofluorescence and ELISA research applications.
Applications	WB, IHC-P, IF-P, ELISA
Host/Source	Rabbit
Reactivity	Human, Mouse, Rat

PRODUCT PROPERTIES

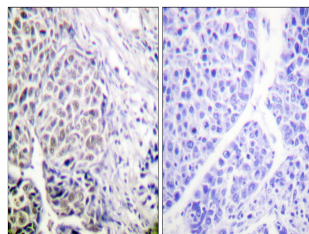
Clonality	Polyclonal
Clone ID	
Concentration	1 mg/mL
Conjugation	Unconjugated
Purification	The antibody was affinity-purified from rabbit anti-serum by affinity-chromatography.
Dilution Range	WB 1:500-1:2000 IHC 1:100-1:300 ELISA 1:10000
Formulation	PBS, 50% Glycerol, 0.5% BSA and 0.02% Sodium Azide.
Isotype	IgG
Storage Instruction	Store at -20°C for up to 1 year from the date of receipt, and avoid repeat freeze-thaw cycles.

TARGET INFORMATION

Gene ID	9212
Gene Symbol	AURKB
Uniprot ID	AURKB_HUMAN
Immunogen	The antiserum was produced against synthesized peptide derived from human AurB around the phosphorylation site of Tyr12 at amino acid range 1-50
Immunogen Region	1-80
Specificity	Phospho-AURKB-Tyr12 polyclonal antibody (Aurora Kinase B) binds to endogenous Aurora Kinase B at the amino acid region 1-80 only when phosphorylated at Tyr12.
Immunogen Sequence	



Western blot analysis of lysates from K562 cells, using AurB (Phospho-Tyr12) Antibody. The lane on the right is blocked with the phospho peptide.



Immunohistochemistry analysis of paraffin-embedded human liver carcinoma, using AurB (Phospho-Tyr12) Antibody. The picture on the right is blocked with the phospho peptide.

This product is suitable for in-vitro studies under the RESEARCH USE ONLY [RUO] licence. This product must not be used as for diagnostic or other medical purposes.
St John's Laboratory Ltd, Knowledge Dock Business Centre, University Way, London, E16 2RD | Tel: 0208 223 3081